

Allgemeine Informationen

Katalog-Nr.: 27733-1-AP	GenBank-Zugangsnummer: BC075805	Reinigungsmethode: Antigen-Affinitätsreinigung
Größe: 150ul, Konzentration: 500 µg/ml von Nanodrop;	GeneID (NCBI): 4976	Empfohlene Verdünnungen: WB 1:1000-1:4000 IP 0.5-4.0 µg für IP und 1:500-1:2000 für WB IHC 1:50-1:500
Wirt: Kaninchen	Vollständiger Name: optic atrophy 1 (autosomal dominant)	
Isotyp: IgG	Berechnete Masse: 960 aa, 112 kDa	
Immunogen Katalognummer: AG26887	Beobachtete Masse: 100 kDa, 80-90 kDa	

Anwendungen

Geprüfte Anwendungen:

IHC, IP, WB, ELISA

In Publikationen genannte Anwendungen:

CoIP, IF, IHC, WB

Getestete Reaktivität:

Human, Maus, Ratte

Zitierte Arten:

Hamster, Hausschwein, Huhn, Human, Maus, Ratte, Rind, Zebrafisch, Ziege

Hinweis-IHC: Antigenmaskierung mit TE-Puffer pH 9,0 empfohlen. (*) Wahlweise kann die Antigenmaskierung auch mit Citratpuffer pH 6,0 erfolgen.

Positivkontrollen:

WB: A431-Zellen, HEK-293-Zellen, HeLa-Zellen, HepG2-Zellen, Maushirngewebe, Rattenhirngewebe

IP: Maushirngewebe,

IHC: Mausherzgewebe, Maushirngewebe

Hintergrundinformationen

OPA1 is a nuclear-encoded mitochondrial protein with similarity to dynamin-related GTPases. OPA1 localizes to the inner mitochondrial membrane and helps regulate mitochondrial stability and energy output. This protein also sequesters cytochrome c. OPA1 is associated with the inner membrane and protects cells from apoptosis by regulating inner membrane dynamics. Mutation of OPA1 causes the disease dominant optic atrophy, a degeneration of the retinal ganglion cells. OPA1 undergoes complex posttranscriptional regulation and posttranslational proteolysis. OPA1 is regulated by proteolytic cleavage, which degrades long OPA1 isoforms into short isoforms. The gene OPA1 can be cleaved into some chains with MW 100 kDa and 80-90 kDa.

Bemerkenswerte Veröffentlichungen

Verfasser	Pubmed ID	Journal	Anwendung
Rocío García-Arroyo	36232896	Int J Mol Sci	WB
Q E Xie	34571250	Mitochondrion	WB
Siwen Li	28957766	Chemosphere	WB

Lagerung

Lagerungsbedingungen:

Bei -20°C lagern. Nach dem Versand ein Jahr lang stabil

Lagerungspuffer:

PBS mit 0.02% Natriumazid und 50% Glycerin pH 7.3.

Aliquotieren ist nicht notwendig bei -20°C Lagerung

*** 20ul-Größen enthalten 0.1% BSA

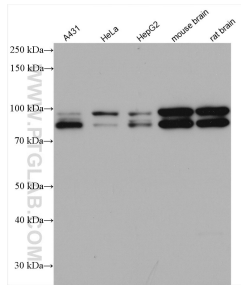
For technical support and original validation data for this product please contact:

T: 1 (888) 4PTGLAB (1-888-478-4522) (toll free in USA), or 1(312) 455-8498 (outside USA)

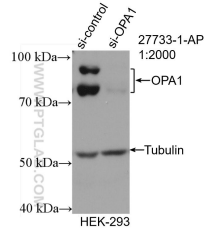
E: proteintech@ptglab.com
 W: ptglab.com

This product is exclusively available under Proteintech Group brand and is not available to purchase from any other manufacturer.

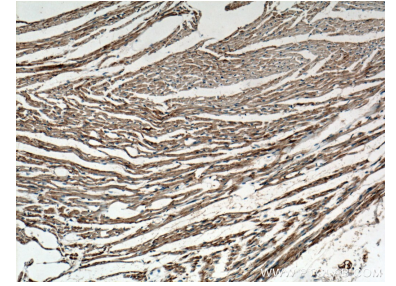
Ausgewählte Validierungsdaten



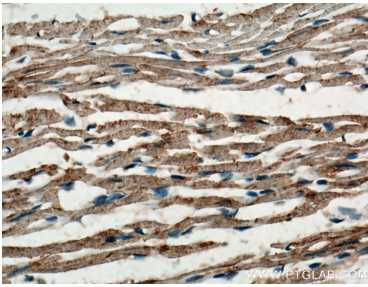
Various lysates were subjected to SDS PAGE followed by western blot with 27733-1-AP (OPA1 antibody) at dilution of 1:2000 incubated at room temperature for 1.5 hours.



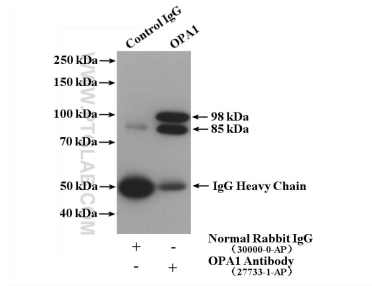
WB result of OPA1 antibody (27733-1-AP; 1:2000; incubated at room temperature for 1.5 hours) with sh-Control and sh-OPA1 transfected HEK-293 cells.



Immunohistochemical analysis of paraffin-embedded mouse heart tissue slide using 27733-1-AP (OPA1 antibody) at dilution of 1:200 (under 10x lens. Heat mediated antigen retrieval with Tris-EDTA buffer (pH 9.0).



Immunohistochemical analysis of paraffin-embedded mouse heart tissue slide using 27733-1-AP (OPA1 antibody) at dilution of 1:200 (under 40x lens. Heat mediated antigen retrieval with Tris-EDTA buffer (pH 9.0).



IP result of anti-OPA1 (IP:27733-1-AP, 4ug; Detection:27733-1-AP 1:1000) with mouse brain tissue lysate 4000 ug.