

Nur für Forschungszwecke

YTHDC2 Polyklonaler Antikörper

Katalog-Nr.: 27779-1-AP

Vorgestelltes Produkt

14 Publikationen



Allgemeine Informationen

Katalog-Nr.: 27779-1-AP	GenBank-Zugangsnummer: BC137285	Reinigungsmethode: Antigen-Affinitätsreinigung
Größe: 150ul, Konzentration: 800 µg/ml von Nanodrop;	GeneID (NCBI): 64848	Empfohlene Verdünnungen: WB 1:1000-1:8000 IF 1:50-1:500
Wirt: Kaninchen	Vollständiger Name: YTH domain containing 2	
Isotyp: IgG	Beobachtete Masse: 160 kDa	
Immunogen Katalognummer: AG26690		

Anwendungen

Geprüfte Anwendungen: IF, WB, ELISA	Positivkontrollen:
In Publikationen genannte Anwendungen: IF, IP, WB	WB: HepG2-Zellen, BxPC-3-Zellen, HeLa-Zellen, Maushodengewebe, MCF-7-Zellen, MDA-MB-231-Zellen
Getestete Reaktivität: Human, Maus	IF: HepG2-Zellen,
Zitierte Arten: Human, Maus	

Hintergrundinformationen

YTHDC2, also named as Probable ATP-dependent RNA helicase YTHDC2, is a 1430 amino acid protein, which belongs to the DEAD box helicase family. YTHDC2 specifically recognizes and binds N6-methyladenosine (m6A)-containing RNAs. m6A is a modification present at internal sites of mRNAs and some non-coding RNAs and plays a role in the efficiency of mRNA splicing, processing and stability.

Bemerkenswerte Veröffentlichungen

Verfasser	Pubmed ID	Journal	Anwendung
Kusuma Suphakhong	36183833	J Biol Chem	WB
Hao Sheng	31504235	Carcinogenesis	WB
Lingfang Wang	36288717	Cell Rep	WB

Lagerung

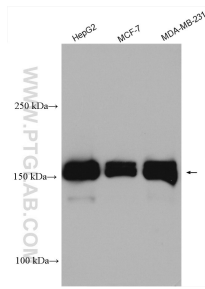
Lagerungsbedingungen:
Bei -20°C lagern. Nach dem Versand ein Jahr lang stabil
Lagerungspuffer:
PBS mit 0.02% Natriumazid und 50% Glycerin pH 7.3.
Aliquotieren ist nicht notwendig bei -20°C Lagerung

*** 20ul-Größen enthalten 0.1% BSA

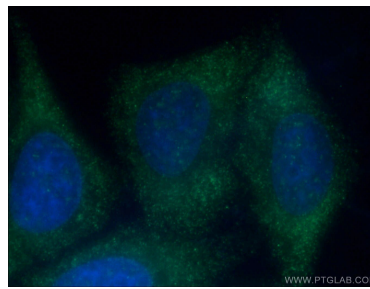
For technical support and original validation data for this product please contact:
T: 1 (888) 4PTGLAB (1-888-478-4522) (toll free in USA), or 1(312) 455-8498 (outside USA)
E: proteintech@ptglab.com
W: ptglab.com

This product is exclusively available under Proteintech Group brand and is not available to purchase from any other manufacturer.

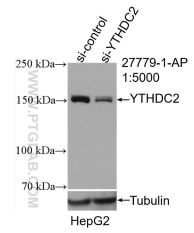
Ausgewählte Validierungsdaten



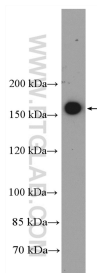
Various lysates were subjected to SDS PAGE followed by western blot with 27779-1-AP (YTHDC2 antibody) at dilution of 1:4000 incubated at room temperature for 1.5 hours.



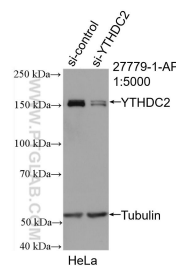
Immunofluorescent analysis of (-20°C Ethanol) fixed HepG2 cells using 27779-1-AP (YTHDC2 antibody) at dilution of 1:50 and Alexa Fluor 488-conjugated AffiniPure Goat Anti-Rabbit IgG(H+L).



WB result of YTHDC2 antibody (27779-1-AP; 1:5000; incubated at room temperature for 1.5 hours) with sh-Control and sh-YTHDC2 transfected HepG2 cells.



HepG2 cells were subjected to SDS PAGE followed by western blot with 27779-1-AP (YTHDC2 antibody) at dilution of 1:600 incubated at room temperature for 1.5 hours.



WB result of YTHDC2 antibody (27779-1-AP; 1:5000; incubated at room temperature for 1.5 hours) with sh-Control and sh-YTHDC2 transfected HeLa cells.