

Nur für Forschungszwecke

MDM2 Polyklonaler Antikörper

Katalog-Nr.: 27883-1-AP

Vorgestelltes Produkt

7 Publikationen



Allgemeine Informationen

Katalog-Nr.:
27883-1-AP

Größe:

150ul, Konzentration: 700 µg/ml von Nanodrop und 367 µg/ml durch die Bradford-Methode mit BSA als Standard;

Wirt:

Kaninchen

Isotyp:

IgG

Immunogen Katalognummer:
AG27255

GenBank-Zugangsnummer:

NM_001145337.2

GeneID (NCBI):

4193

Vollständiger Name:

Mdm2 p53 binding protein homolog (mouse)

Berechnete Masse:

55 kDa

Beobachtete Masse:

75-85 kDa

Reinigungsmethode:

Antigen-Affinitätsreinigung

Empfohlene Verdünnungen:

WB 1:500-1:3000

Anwendungen

Geprüfte Anwendungen:

FC, WB, ELISA

In Publikationen genannte Anwendungen:

IF, IHC, WB

Getestete Reaktivität:

Human

Zitierte Arten:

Human, Ratte

Positivkontrollen:

WB: MCF-7-Zellen, A431-Zellen, T-47D-Zellen

Hintergrundinformationen

MDM2, also known as HDM2, is a protein of the E3 ubiquitin-ligase family. MDM2 is recognized as a proto-oncogene and is over-expressed in a wide range of human malignancies including soft tissue carcinomas and breast cancer. MDM2 can bind to the p53 tumor suppressor protein with high affinity, and negatively regulates p53 by mediating its ubiquitination and proteosomal degradation (PMID: 17000718). MDM2 has some isoforms with calculated molecular mass of 25-55kD, but always can be detected as 90-97kD. In addition to full length MDM2, two lower bands (85kD and 75kD) are often observed which are likely to be produced by translation initiation at methionine codons 50 and 60. Another isoform of MDM2 is often observed as 57-60kD in cell lines which is indeed a caspase cleavage product of MDM2 at residue 361 (PMID: 19565011, 9840926, 7689721).

Bemerkenswerte Veröffentlichungen

Verfasser	Pubmed ID	Journal	Anwendung
Mingzhe Zheng	36434180	Oncogene	WB, IHC, IF
Hidemichi Kouzu	35316214	J Clin Invest	WB
Lei Shi	35072515	Mol Cell Biol	WB

Lagerung

Lagerungsbedingungen:

Bei -20°C lagern. Nach dem Versand ein Jahr lang stabil

Lagerungspuffer:

PBS mit 0.02% Natriumazid und 50% Glycerin pH 7.3.

Aliquotieren ist nicht notwendig bei -20°C Lagerung

*** 20ul-Größen enthalten 0.1% BSA

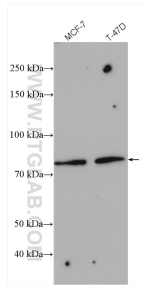
For technical support and original validation data for this product please contact:

T: 1 (888) 4PTGLAB (1-888-478-4522) (toll free in USA), or 1(312) 455-8498 (outside USA)

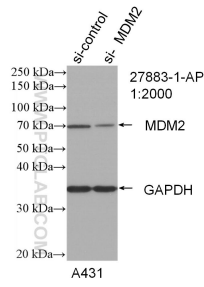
E: proteintech@ptglab.com
W: ptglab.com

This product is exclusively available under Proteintech Group brand and is not available to purchase from any other manufacturer.

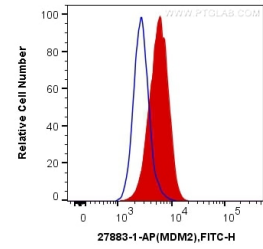
Ausgewählte Validierungsdaten



Various lysates were subjected to SDS PAGE followed by western blot with 27883-1-AP (MDM2 antibody) at dilution of 1:2000 incubated at room temperature for 1.5 hours.



WB result of MDM2 antibody (27883-1-AP; 1:2000; incubated at room temperature for 1.5 hours) with sh-Control and sh-MDM2 transfected A431 cells.



1X10⁶ HeLa cells were intracellularly stained with 0.2 ug Anti-Human MDM2 (27883-1-AP) and CoraLite@488-Conjugated AffiniPure Goat Anti-Rabbit IgG(H+L) at dilution 1:1000 (red), or 0.2 ug Control Antibody. Cells were fixed with 4% PFA and permeabilized with Flow Cytometry Perm Buffer (PF00011-C).