

Nur für Forschungszwecke

NAP1L4 Polyklonaler Antikörper

Katalog-Nr.: 27889-1-AP

Vorgestelltes Produkt



Allgemeine Informationen

Katalog-Nr.:
27889-1-AP

Größe:
150ul, Konzentration: 600 µg/ml von
Nanodrop und 400 µg/ml durch die
Bradford-Methode mit BSA als
Standard;

Wirt:
Kaninchen

Isotyp:
IgG

Immunogen Katalognummer:
AG27469

GenBank-Zugangsnummer:
BC022090

GeneID (NCBI):
4676

Vollständiger Name:
nucleosome assembly protein 1-like
4

Berechnete Masse:
375 aa, 43 kDa

Beobachtete Masse:
52 kDa

Reinigungsmethode:

Antigen-Affinitätsreinigung

Empfohlene Verdünnungen:
WB 1:500-1:2000

Anwendungen

Geprüfte Anwendungen:

WB, ELISA

Getestete Reaktivität:

Human, Maus, Ratte

Positivkontrollen:

WB: HeLa-Zellen, HuH-7-Zellen, Mausherzgewebe,
Maushodengewebe, Rattenherzgewebe, U2OS-Zellen

Hintergrundinformationen

NAP1L4 is a member of the nucleosome assembly protein (NAP) family which can interact with both core and linker histones. It can shuttle between the cytoplasm and nucleus, suggesting a role as a histone chaperone. This gene is one of several located near the imprinted gene domain of 11p15.5, an important tumor-suppressor gene region. Alterations in this region have been associated with the Beckwith-Wiedemann syndrome, Wilms tumor, rhabdomyosarcoma, adrenocortical carcinoma, and lung, ovarian, and breast cancer.

Lagerung

Lagerungsbedingungen:

Bei -20°C lagern. Nach dem Versand ein Jahr lang stabil

Lagerungspuffer:

PBS mit 0.02% Natriumazid und 50% Glycerin pH 7.3.

Aliquotieren ist nicht notwendig bei -20°C Lagerung

*** 20ul-Größen enthalten 0.1% BSA

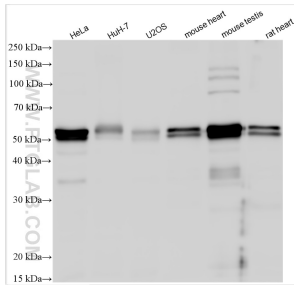
For technical support and original validation data for this product please contact:

T: 1 (888) 4PTGLAB (1-888-478-4522) (toll free
in USA), or 1(312) 455-8498 (outside USA)

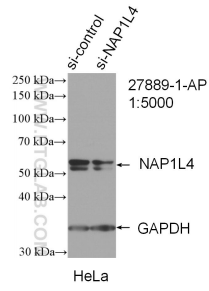
E: proteintech@ptglab.com
W: ptglab.com

This product is exclusively available under Proteintech Group brand and is not available to purchase from any other manufacturer.

Ausgewählte Validierungsdaten



Various lysates were subjected to SDS PAGE followed by western blot with 27889-1-AP (NAP1L4 antibody) at dilution of 1:1000 incubated at room temperature for 1.5 hours.



WB result of NAP1L4 antibody (27889-1-AP; 1:5000; incubated at room temperature for 1.5 hours) with sh-Control and sh-NAP1L4 transfected HeLa cells.