

Nur für Forschungszwecke

CRM1 Polyklonaler Antikörper

Katalog-Nr.: 27917-1-AP

2 Publikationen



Allgemeine Informationen

| | | |
|--|--|--|
| Katalog-Nr.: 27917-1-AP | GenBank-Zugangsnummer: BC032847 | Reinigungsmethode: Antigen-Affinitätsreinigung |
| Größe: 150ul, Konzentration: 550 µg/ml von Nanodrop; | GeneID (NCBI): 7514 | Empfohlene Verdünnungen: WB 1:2000-1:10000 IHC 1:50-1:500 |
| Wirt: Kaninchen | Vollständiger Name: exportin 1 (CRM1 homolog, yeast) | |
| Isotyp: IgG | Berechnete Masse: 1071 aa, 123 kDa | |
| Immunogen Katalognummer: AG27207 | Beobachtete Masse: 123 kDa | |

Anwendungen

| | |
|--|--|
| Geprüfte Anwendungen: IHC, WB, ELISA | Positivkontrollen: WB : HEK-293-Zellen, C6-Zellen, HeLa-Zellen, HT-1080.Zellen, K-562-Zellen, MCF-7-Zellen, NIH/3T3-Zellen |
| In Publikationen genannte Anwendungen: IF, IHC | IHC : humanes Kolonkarzinomgewebe, |
| Getestete Reaktivität: Human, Maus, Ratte | |
| Zitierte Arten: Human, Maus | |

Hinweis-IHC: Antigendemaskierung mit TE-Puffer pH 9,0 empfohlen. (*) Wahlweise kann die Antigendemaskierung auch mit Citratpuffer pH 6,0 erfolgen.

Hintergrundinformationen

CRM1 (chromosome region maintenance 1, also known as exportin-1 or XPO1), a member of the karyopherin β family of transport receptors, is an important nuclear export receptor recognizing proteins bearing a leucine-rich nuclear export signal (PMID: 9323133). CRM1 is the major receptor for the export of proteins out of the nucleus and is also required for transport of many RNAs (PMID: 17317185). In addition to nuclear export, CRM1 also plays a role in centrosome duplication and spindle assembly (PMID: 22773955). Elevated CRM1 expression has been reported in several cancers, which implicates CRM1 as a potential anti-cancer drug target (PMID: 22677130; 21683812).

Bemerkenswerte Veröffentlichungen

| Verfasser | Pubmed ID | Journal | Anwendung |
|--------------|-----------|-------------------------|-----------|
| Sukhbir Kaur | 34841476 | J Cell Commun Signal | IF |
| Yuanqiao He | 36840755 | J Cancer Res Clin Oncol | IHC |

Lagerung

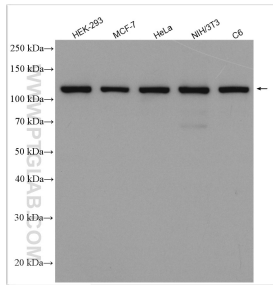
Lagerungsbedingungen:
Bei -20°C lagern. Nach dem Versand ein Jahr lang stabil
Lagerungspuffer:
PBS mit 0.02% Natriumazid und 50% Glycerin pH 7.3.
Aliquotieren ist nicht notwendig bei -20°C Lagerung

*** 20ul-Größen enthalten 0.1% BSA

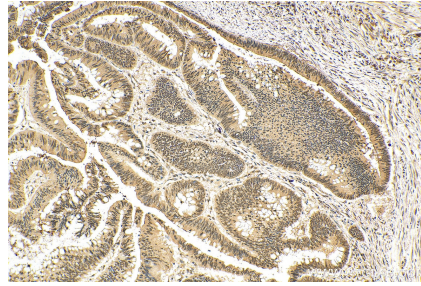
For technical support and original validation data for this product please contact:
T: 1 (888) 4PTGLAB (1-888-478-4522) (toll free in USA), or 1(312) 455-8498 (outside USA)
E: proteintech@ptglab.com
W: ptglab.com

This product is exclusively available under Proteintech Group brand and is not available to purchase from any other manufacturer.

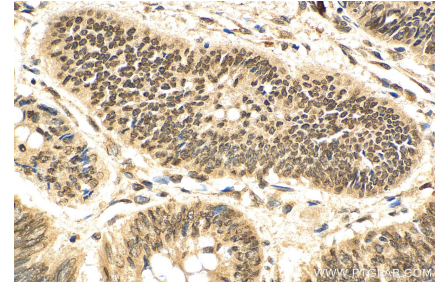
Ausgewählte Validierungsdaten



Various lysates were subjected to SDS PAGE followed by western blot with 27917-1-AP (CRM1 antibody) at dilution of 1:5000 incubated at room temperature for 1.5 hours.



Immunohistochemical analysis of paraffin-embedded human colon cancer tissue slide using 27917-1-AP (CRM1 antibody) at dilution of 1:200 (under 10x lens). Heat mediated antigen retrieval with Tris-EDTA buffer (pH 9.0).



Immunohistochemical analysis of paraffin-embedded human colon cancer tissue slide using 27917-1-AP (CRM1 antibody) at dilution of 1:200 (under 40x lens). Heat mediated antigen retrieval with Tris-EDTA buffer (pH 9.0).