

Nur für Forschungszwecke

# Cathepsin L Polyklonaler Antikörper



Katalog-Nr.: 27952-1-AP

Vorgestelltes Produkt

2 Publikationen

## Allgemeine Informationen

<b>Katalog-Nr.:</b> 27952-1-AP	<b>GenBank-Zugangsnummer:</b> BC012612	<b>Reinigungsmethode:</b> Antigen-Affinitätsreinigung
<b>Größe:</b> 150ul, Konzentration: 320 µg/ml von Nanodrop;	<b>GeneID (NCBI):</b> 1514	<b>Empfohlene Verdünnungen:</b> WB 1:500-1:1000 IHC 1:50-1:500
<b>Wirt:</b> Kaninchen	<b>Vollständiger Name:</b> cathepsin L1	
<b>Isotyp:</b> IgG	<b>Berechnete Masse:</b> 38 kDa	
<b>Immunogen Katalognummer:</b> AG27813	<b>Beobachtete Masse:</b> 36-39 kDa, 29 kDa	

## Anwendungen

<b>Geprüfte Anwendungen:</b> IHC, WB, ELISA	<b>Positivkontrollen:</b> WB: A549-Zellen, IHC: humanes Leberkarzinomgewebe,
<b>In Publikationen genannte Anwendungen:</b> IHC, WB	
<b>Getestete Reaktivität:</b> Human, Maus	
<b>Zitierte Arten:</b> Human, Maus	
<b>Hinweis-IHC: Antigendemaskierung mit TE-Puffer pH 9,0 empfohlen. (*) Wahlweise kann die Antigendemaskierung auch mit Citratpuffer pH 6,0 erfolgen.</b>	

## Hintergrundinformationen

CTSL1 (Cathepsin L1) is also named as CTSL and MEP, belongs to the peptidase C1 family. It is a lysosomal proteinase whose expression is also up-regulated in the skeletal muscle during starvation (PMID:20088826). It plays an intracellular role in normal intestinal epithelial polarization and initiation of neoplasia (PMID:17622569). CTSL1 also improves cardiac function and inhibits cardiac hypertrophy, inflammation, and fibrosis through blocking AKT/GSK3B signaling (PMID:19096818). The full length protein is 38 kDa with a signal peptide, two propeptide and a glycosylation site. It has been detected the 36 kDa, 39 kDa, 29 kDa and 21 kDa in rat gastrocnemius muscle. These forms of cathepsin L could either be attributed to differences in glycosylation or to partial processing of the proenzyme. (PMID:11696001)

## Bemerkenswerte Veröffentlichungen

Verfasser	Pubmed ID	Journal	Anwendung
Huixia Fan	35935881	Front Pharmacol	IHC
Zi-Bo Li	36627345	Acta Pharmacol Sin	WB

## Lagerung

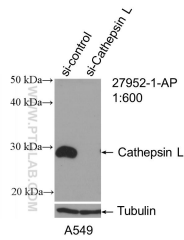
**Lagerungsbedingungen:**  
Bei -20°C lagern. Nach dem Versand ein Jahr lang stabil  
**Lagerungspuffer:**  
PBS mit 0.02% Natriumazid und 50% Glycerin pH 7.3.  
Aliquotieren ist nicht notwendig bei -20°C Lagerung

\*\*\* 20ul-Größen enthalten 0.1% BSA

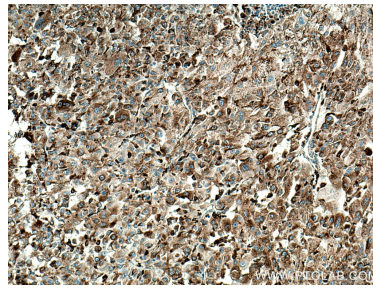
For technical support and original validation data for this product please contact:  
T: 1 (888) 4PTGLAB (1-888-478-4522) (toll free in USA), or 1(312) 455-8498 (outside USA)  
E: proteintech@ptglab.com  
W: ptglab.com

This product is exclusively available under Proteintech Group brand and is not available to purchase from any other manufacturer.

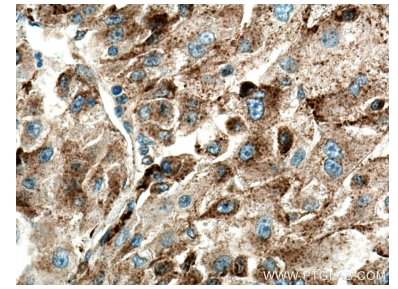
## Ausgewählte Validierungsdaten



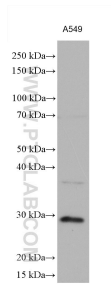
WB result of Cathepsin L antibody (27952-1-AP; 1:600; incubated at room temperature for 1.5 hours) with sh-Control and sh-Cathepsin L transfected A549 cells.



Immunohistochemical analysis of paraffin-embedded human liver cancer tissue slide using 27952-1-AP (Cathepsin L antibody) at dilution of 1:200 (under 10x lens). Heat mediated antigen retrieval with Tris-EDTA buffer (pH 9.0).



Immunohistochemical analysis of paraffin-embedded human liver cancer tissue slide using 27952-1-AP (Cathepsin L antibody) at dilution of 1:200 (under 40x lens). Heat mediated antigen retrieval with Tris-EDTA buffer (pH 9.0).



A549 cells were subjected to SDS PAGE followed by western blot with 27952-1-AP (Cathepsin L antibody) at dilution of 1:1000 incubated at room temperature for 1.5 hours.