

## Allgemeine Informationen

<b>Katalog-Nr.:</b> 27991-1-AP	<b>GenBank-Zugangsnummer:</b> NM_000892	<b>Reinigungsmethode:</b> Antigen-Affinitätsreinigung
<b>Größe:</b> 150ul, Konzentration: 450 µg/ml von Nanodrop und 333 µg/ml durch die Bradford-Methode mit BSA als Standard;	<b>GeneID (NCBI):</b> 3818	<b>Empfohlene Verdünnungen:</b> WB 1:500-1:2000 IHC 1:50-1:500
<b>Wirt:</b> Kaninchen	<b>Vollständiger Name:</b> kallikrein B, plasma (Fletcher factor) 1	
<b>Isotyp:</b> IgG	<b>Berechnete Masse:</b> 71 kDa	
<b>Immunogen Katalognummer:</b> AG27491	<b>Beobachtete Masse:</b> 52-70 kDa	

## Anwendungen

<b>Geprüfte Anwendungen:</b> IHC, WB, ELISA	<b>Positivkontrollen:</b>
<b>Getestete Reaktivität:</b> Human, Maus, Ratte	<b>WB:</b> Mausnierengewebe, Maus-Pankreasgewebe, Rattennierengewebe, Ratten-Pankreasgewebe
<b>Hinweis-IHC: Antigenmaskierung mit TE-Puffer pH 9,0 empfohlen. (*) Wahlweise kann die Antigenmaskierung auch mit Citratpuffer pH 6,0 erfolgen.</b>	<b>IHC:</b> humanes Leberkarzinomgewebe,

## Hintergrundinformationen

Human Plasma Kallikrein, a serine protease also named as KLKB1, KLK3, PPK or Kininogenin, is synthesized in the liver and circulates in the plasma by binding to high molecular weight (HMW) kininogen or as a free zymogen. It cleaves HMW kininogen, its major physiological substrate, to release the potent vasodilator peptide bradykinin. It is also able to cleave a number of inactive precursor proteins to generate active products, such as plasminogen and prourokinase. Thus, it plays an important role in blood pressure regulation, fibrinolysis, and neutrophil activation. KLKB1 precursor contains a signal peptide (residues 1 to 19) and a pro form sequence (residues 20 to 638). Upon activation, the pro form is converted to a heavy chain and a light chain, which is linked by disulfide bonds and the latter contains the catalytic domain (PMID: 3521732). KLKB1 is a ~70 kDa protein and can be detected as 80-86 kDa (glycosylation form), 52 kDa (heavy chain), 36-44 kDa (light chain) and 18 kDa (often detected in cancer) (PMID: 17963278, 3521732). KLKB1 may be a potential candidate serum biomarker of cancer. The antigen of this antibody just cover the heavy chain of KLKB1, so this antibody cannot recognize the light chain.

## Lagerung

**Lagerungsbedingungen:**  
Bei -20°C lagern. Nach dem Versand ein Jahr lang stabil

**Lagerungspuffer:**  
PBS mit 0.02% Natriumazid und 50% Glycerin pH 7.3.

Aliquotieren ist nicht notwendig bei -20°C Lagerung

\*\*\* 20ul-Größen enthalten 0.1% BSA

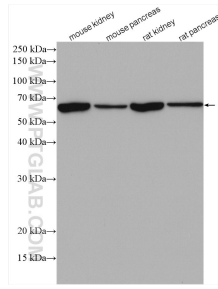
For technical support and original validation data for this product please contact:

T: 1 (888) 4PTGLAB (1-888-478-4522) (toll free  
in USA), or 1(312) 455-8498 (outside USA)

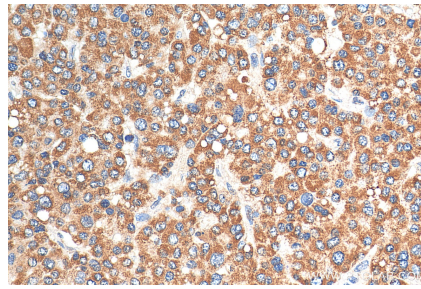
E: proteintech@ptglab.com  
W: ptglab.com

This product is exclusively available under Proteintech Group brand and is not available to purchase from any other manufacturer.

## Ausgewählte Validierungsdaten



Various lysates were subjected to SDS PAGE followed by western blot with 27991-1-AP (KLKB1 antibody) at dilution of 1:1000 incubated at room temperature for 1.5 hours.



Immunohistochemical analysis of paraffin-embedded human liver cancer tissue slide using 27991-1-AP (KLKB1 antibody) at dilution of 1:200 (under 40x lens). Heat mediated antigen retrieval with Tris-EDTA buffer (pH 9.0).