

Nur für Forschungszwecke

# ATP1A3 (middle) Polyklonaler Antikörper



Katalog-Nr.: 28030-1-AP

2 Publikationen

## Allgemeine Informationen

<b>Katalog-Nr.:</b> 28030-1-AP	<b>GenBank-Zugangsnummer:</b> BC015566	<b>Reinigungsmethode:</b> Antigen-Affinitätsreinigung
<b>Größe:</b> 150ul, Konzentration: 300 µg/ml von Nanodrop und 267 µg/ml durch die Bradford-Methode mit BSA als Standard;	<b>GeneID (NCBI):</b> 478	<b>Empfohlene Verdünnungen:</b> WB 1:5000-1:50000 IHC 1:50-1:500 IF 1:50-1:500
<b>Wirt:</b> Kaninchen	<b>Vollständiger Name:</b> ATPase, Na <sup>+</sup> /K <sup>+</sup> transporting, alpha 3 polypeptide	
<b>Isotyp:</b> IgG	<b>Berechnete Masse:</b> 113 kDa	
<b>Immunogen Katalognummer:</b> AG27705	<b>Beobachtete Masse:</b> 113 kDa	

## Anwendungen

<b>Geprüfte Anwendungen:</b> IF, IHC, WB, ELISA	<b>Positivkontrollen:</b> WB : HeLa-Zellen, SH-SY5Y-Zellen, SKOV-3-Zellen, U-87 MG-Zellen IHC : humanes Prostatakarzinomgewebe, IF : HeLa-Zellen,
<b>In Publikationen genannte Anwendungen:</b> IF, WB	
<b>Getestete Reaktivität:</b> Human	
<b>Zitierte Arten:</b> Human	

**Hinweis-IHC: Antigenmaskierung mit TE-Puffer pH 9,0 empfohlen. (\*) Wahlweise kann die Antigenmaskierung auch mit Citratpuffer pH 6,0 erfolgen.**

## Hintergrundinformationen

ATP1A3 participates in the catalytic hydrolysis of ATP and the exchanging of sodium and potassium ions across plasma membrane. The catalytic activity mode is  $ATP + H_2O + Na^+(In) + K^+(Out) = ADP + phosphate + Na^+(Out) + K^+(In)$ . It has been published that the neurologic disorders rapid-onset dystonia-parkinsonism (RDP), alternating hemiplegia of childhood (ACH) and CAPOS syndrome (cerebellar ataxia, areflexia, pes cavus, optic atrophy and sensorineural hearing loss) are all related with the mutation of ATP1A3. There are other reports suggest that early life epilepsy and episodic apnea revealing are potentially associated with the mutation of ATP1A3 as a result of impairment of Na/K homeostasis. This antibody is generated against the middle region (378-580aa) of ATP1A3 and detects 113 kDa protein in SDS-PAGE. (PMID: 30097153, 20301294, 29922587)

## Bemerkenswerte Veröffentlichungen

Verfasser	Pubmed ID	Journal	Anwendung
Yi-Ing Chen	35618735	Nat Commun	WB
Satoko Miyatake	33762331	Sci Adv	WB, IF

## Lagerung

**Lagerungsbedingungen:**  
Bei -20°C lagern. Nach dem Versand ein Jahr lang stabil  
**Lagerungspuffer:**  
PBS mit 0.02% Natriumazid und 50% Glycerin pH 7.3.  
Aliquotieren ist nicht notwendig bei -20°C Lagerung

\*\*\* 20ul-Größen enthalten 0.1% BSA

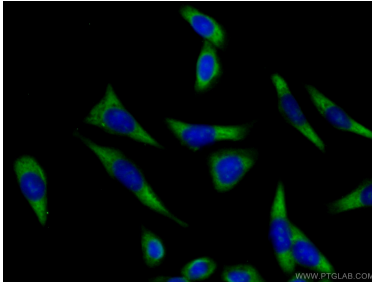
For technical support and original validation data for this product please contact:

T: 1 (888) 4PTGLAB (1-888-478-4522) (toll free in USA), or 1(312) 455-8498 (outside USA)

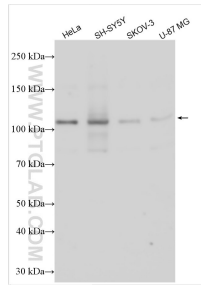
E: proteintech@ptglab.com  
W: ptglab.com

This product is exclusively available under Proteintech Group brand and is not available to purchase from any other manufacturer.

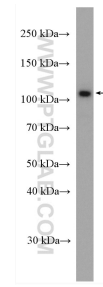
## Ausgewählte Validierungsdaten



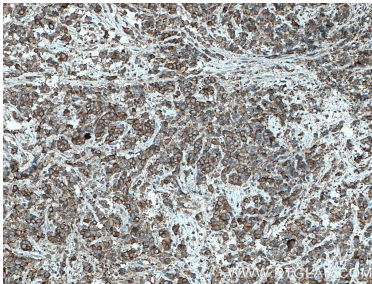
Immunofluorescent analysis of (-20°C Ethanol) fixed HeLa cells using 28030-1-AP (ATP1A3 (middle) antibody) at dilution of 1:50 and CoraLite488-Conjugated AffiniPure Goat Anti-Rabbit IgG(H+L).



Various lysates were subjected to SDS PAGE followed by western blot with 28030-1-AP (ATP1A3 (middle) antibody) at dilution of 1:14000 incubated at room temperature for 1.5 hours.



HeLa cells were subjected to SDS PAGE followed by western blot with 28030-1-AP (ATP1A3 antibody) at dilution of 1:2000 incubated at room temperature for 1.5 hours.



Immunohistochemical analysis of paraffin-embedded human prostate cancer tissue slide using 28030-1-AP (ATP1A3 antibody) at dilution of 1:200 (under 10x lens. Heat mediated antigen retrieval with Tris-EDTA buffer (pH 9.0).