

## Allgemeine Informationen

<b>Katalog-Nr.:</b> 28058-1-AP	<b>GenBank-Zugangsnummer:</b> NM_001291058	<b>Reinigungsmethode:</b> Antigen-Affinitätsreinigung
<b>Größe:</b> 150ul , Konzentration: 400 µg/ml von Nanodrop;	<b>GeneID (NCBI):</b> 12514	<b>Empfohlene Verdünnungen:</b> WB 1:600-1:2000 IHC 1:500-1:2000 IF 1:50-1:500
<b>Wirt:</b> Kaninchen	<b>Vollständiger Name:</b> CD68 antigen	
<b>Isotyp:</b> IgG	<b>Berechnete Masse:</b> 35 kDa	
<b>Immunogen Katalognummer:</b> AG27827	<b>Beobachtete Masse:</b> 100 kDa	

## Anwendungen

<b>Geprüfte Anwendungen:</b> FC, IF, IHC, WB, ELISA	<b>Positivkontrollen:</b> WB : RAW 264.7-Zellen, Mausmilzgewebe IHC : Mausmilzgewebe, Mauslebergewebe IF : Mausmilzgewebe,
<b>In Publikationen genannte Anwendungen:</b> FC, IF, IHC, WB	
<b>Getestete Reaktivität:</b> Maus	
<b>Zitierte Arten:</b> Hausschwein, Hund, Maus, Ratte	

**Hinweis-IHC: Antigendemaskierung mit TE-Puffer pH 9,0 empfohlen. (\*) Wahlweise kann die Antigendemaskierung auch mit Citratpuffer pH 6,0 erfolgen.**

## Hintergrundinformationen

Mouse CD68 (also known as macroscialin) is a type I transmembrane glycoprotein that is highly and specifically expressed by mouse tissue macrophages, and to a lesser extent by dendritic cells. It belongs to the lysosomal/endosomal-associated membrane glycoprotein (LAMP) family and primarily localizes to lysosomes and endosomes with a smaller fraction circulating to the cell surface. CD68 is also a member of the scavenger receptor family. It may play a role in phagocytic activities of tissue macrophages.

## Bemerkenswerte Veröffentlichungen

Verfasser	Pubmed ID	Journal	Anwendung
Aibin Liu	32991738	J Pathol	IHC
Guangping Lu	36235670	Nutrients	IF
Wei Liu	34562326	J Pineal Res	IF

## Lagerung

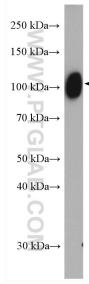
**Lagerungsbedingungen:**  
Bei -20°C lagern. Nach dem Versand ein Jahr lang stabil  
**Lagerungspuffer:**  
PBS mit 0.02% Natriumazid und 50% Glycerin pH 7.3.  
Aliquotieren ist nicht notwendig bei -20°C Lagerung

\*\*\* 20ul-Größen enthalten 0.1% BSA

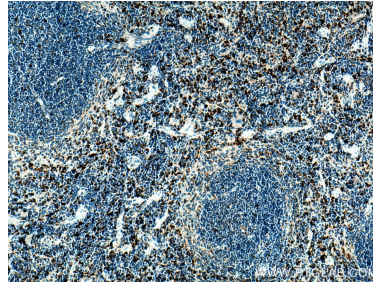
For technical support and original validation data for this product please contact:  
T: 1 (888) 4PTGLAB (1-888-478-4522) (toll free in USA), or 1(312) 455-8498 (outside USA)  
E: [proteintech@ptglab.com](mailto:proteintech@ptglab.com)  
W: [ptglab.com](http://ptglab.com)

This product is exclusively available under Proteintech Group brand and is not available to purchase from any other manufacturer.

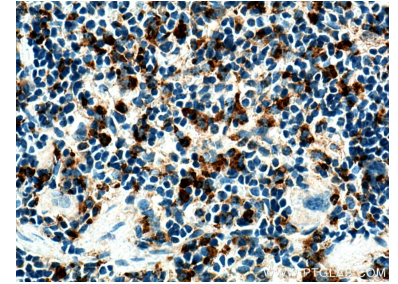
## Ausgewählte Validierungsdaten



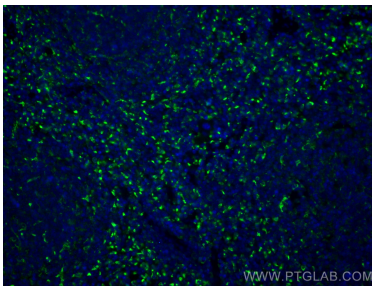
RAW 264.7 cells were subjected to SDS PAGE followed by western blot with 28058-1-AP (Cd68 antibody) at dilution of 1:2000 incubated at room temperature for 1.5 hours.



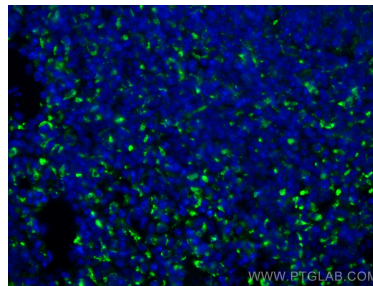
Immunohistochemical analysis of paraffin-embedded mouse spleen tissue slide using 28058-1-AP (Cd68 antibody) at dilution of 1:1000 (under 10x lens). Heat mediated antigen retrieval with Tris-EDTA buffer (pH 9.0).



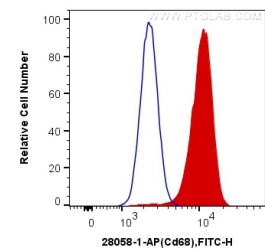
Immunohistochemical analysis of paraffin-embedded mouse spleen tissue slide using 28058-1-AP (Cd68 antibody) at dilution of 1:1000 (under 40x lens). Heat mediated antigen retrieval with Tris-EDTA buffer (pH 9.0).



Immunofluorescent analysis of (4% PFA) fixed mouse spleen tissue using Cd68 antibody (28058-1-AP) at dilution of 1:200 and CoraLite@488-Conjugated AffiniPure Goat Anti-Rabbit IgG(H+L).



Immunofluorescent analysis of (4% PFA) fixed mouse spleen tissue using Cd68 antibody (28058-1-AP) at dilution of 1:200 and CoraLite@488-Conjugated AffiniPure Goat Anti-Rabbit IgG(H+L).



$1 \times 10^6$  RAW 264.7 cells were intracellularly stained with 0.4  $\mu$ g Anti-Mouse Cd68 (28058-1-AP) and CoraLite@488-Conjugated AffiniPure Goat Anti-Rabbit IgG(H+L) at dilution 1:1000 (red), or 0.4  $\mu$ g Control Antibody. Cells were fixed with 4% PFA and permeabilized with Flow Cytometry Perm Buffer (PF00011-C).