

Allgemeine Informationen

Katalog-Nr.: 28106-1-AP	GenBank-Zugangsnummer: NM_014240	Reinigungsmethode: Antigen-Affinitätsreinigung
Größe: 150ul, Konzentration: 900 µg/ml von Nanodrop und 467 µg/ml durch die Bradford-Methode mit BSA als Standard;	GeneID (NCBI): 8994	Empfohlene Verdünnungen: WB 1:1000-1:8000 IP 0.5-4.0 µg für IP und 1:500-1:2000 für WB IHC 1:200-1:800 IF 1:200-1:800
Wirt: Kaninchen	Vollständiger Name: LIM domains containing 1	
Isotyp: IgG	Berechnete Masse: 72 aa	
Immunogen Katalognummer: AG27974	Beobachtete Masse: 72 kDa	

Anwendungen

Geprüfte Anwendungen: IF, IHC, IP, WB, ELISA	Positivkontrollen: WB : A549-Zellen, HeLa-Zellen
Getestete Reaktivität: Human	IP : HeLa-Zellen, IHC : Maushirngewebe, IF : HeLa-Zellen,
Hinweis-IHC: Antigenmaskierung mit TE-Puffer pH 9,0 empfohlen. (*) Wahlweise kann die Antigenmaskierung auch mit Citratpuffer pH 6,0 erfolgen.	

Hintergrundinformationen

LIMD1 is a member of the Ajuba family of LIM domain-containing proteins, these kinds of proteins have been shown to play a role in intracellular signaling, transcriptional regulation and cellular differentiation, proliferation and migration (PMID:17174104). LIMD1 predominantly localizes to the cytoplasm especially in the E-cadherin cell-cell adhesive junction, yet also translocates to the nucleus when functions as an RB corepressor (PMID:19060205). And LIMD1 acts as a scaffolding protein to form a PHD-LIMD1-VHL axis, facilitating HIF1α ubiquitination and degradation by the proteasome (PMID:22800800). LIMD1 specifically interacts with retinoblastoma protein (pRB), inhibits E2F-mediated transcription, and suppresses the expression of the majority of genes with E2F1-responsive elements. As a tumor suppressor, LIMD1 blocks tumor growth in vitro and in vivo, and is frequently down-regulated in human lung tumors (PMID:15542589), and it also be detected in normal and breast cancer tissues. LIMD1 protein exists several phosphorylation sites, which may affect its theoretical molecular weight when tested. Proteintech's 28106-1-AP antibody was generated by 133 amino acids, it could recognize the full-length protein in applications.

Lagerung

Lagerungsbedingungen:
Bei -20°C lagern. Nach dem Versand ein Jahr lang stabil

Lagerungspuffer:
PBS mit 0.02% Natriumazid und 50% Glycerin pH 7.3.

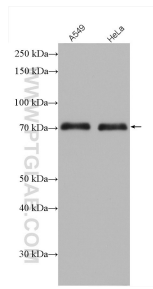
Aliquotieren ist nicht notwendig bei -20°C Lagerung

*** 20ul-Größen enthalten 0.1% BSA

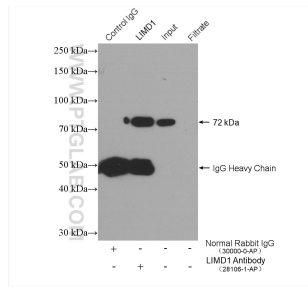
For technical support and original validation data for this product please contact:
T: 1 (888) 4PTGLAB (1-888-478-4522) (toll free in USA), or 1(312) 455-8498 (outside USA)
E: proteintech@ptglab.com
W: ptglab.com

This product is exclusively available under Proteintech Group brand and is not available to purchase from any other manufacturer.

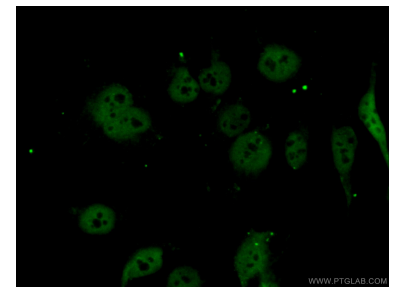
Ausgewählte Validierungsdaten



Various lysates were subjected to SDS PAGE followed by western blot with 28106-1-AP (LIMD1 antibody) at dilution of 1:4000 incubated at room temperature for 1.5 hours.



IP result of anti-LIMD1 (IP:28106-1-AP, 4ug; Detection:28106-1-AP 1:1000) with HeLa cells lysate 2640 ug.



Immunofluorescent analysis of (4% PFA) fixed HeLa cells using 28106-1-AP (LIMD1 antibody) at dilution of 1:400 and Alexa Fluor 488-Conjugated AffiniPure Goat Anti-Rabbit IgG(H+L).



Immunohistochemical analysis of paraffin-embedded mouse brain tissue slide using 28106-1-AP (LIMD1 antibody) at dilution of 1:400 (under 10x lens). Heat mediated antigen retrieval with Tris-EDTA buffer (pH 9.0).