

Nur für Forschungszwecke

# AKT2 Polyklonaler Antikörper

Katalog-Nr.: 28113-1-AP

1 Publikationen



## Allgemeine Informationen

<b>Katalog-Nr.:</b> 28113-1-AP	<b>GenBank-Zugangsnummer:</b> BC120994	<b>Reinigungsmethode:</b> Antigen-Affinitätsreinigung
<b>Größe:</b> 150ul, Konzentration: 550 µg/ml von Nanodrop;	<b>GeneID (NCBI):</b> 208	<b>Empfohlene Verdünnungen:</b> WB 1:500-1:1000 IHC 1:50-1:500 IF 1:50-1:500
<b>Wirt:</b> Kaninchen	<b>Vollständiger Name:</b> v-akt murine thymoma viral oncogene homolog 2	
<b>Isotyp:</b> IgG	<b>Beobachtete Masse:</b> 56 kDa	
<b>Immunogen Katalognummer:</b> AG27005		

## Anwendungen

<b>Geprüfte Anwendungen:</b> FC, IF, IHC, WB, ELISA	<b>Positivkontrollen:</b> WB : NIH/3T3-Zellen, Mauslebergewebe IHC : humanes Lebergewebe, IF : NIH/3T3-Zellen,
<b>In Publikationen genannte Anwendungen:</b> WB	
<b>Getestete Reaktivität:</b> Human, Maus	
<b>Zitierte Arten:</b> Human	
<b>Hinweis-IHC: Antigenmaskierung mit TE-Puffer pH 9,0 empfohlen. (*) Wahlweise kann die Antigenmaskierung auch mit Citratpuffer pH 6,0 erfolgen.</b>	

## Hintergrundinformationen

AKT2 is one of 3 closely related serine/threonine-protein kinases (AKT1, AKT2 and AKT3) called the AKT kinase, and which regulate many processes including metabolism, proliferation, cell survival, growth and angiogenesis and their activation has been observed in a wide variety of cancers. AKT2 is mainly involved in cancer cell survival, apoptosis inhibition, migration and invasion (PMID:21979951). Defects in AKT2 are a cause of susceptibility to breast cancer (BC). AKT2 promotes metastasis of tumor cells without affecting the latency of tumor development. And defects in AKT2 are a cause of non-insulin-dependent diabetes mellitus (NIDDM) and hypoinsulinemic hypoglycemia with hemihypertrophy (HIHGHH). The full length protein has four glycosylation sites.

## Bemerkenswerte Veröffentlichungen

Verfasser	Pubmed ID	Journal	Anwendung
Zhi-Da Zhang	35219877	Int J Biochem Cell Biol	WB

## Lagerung

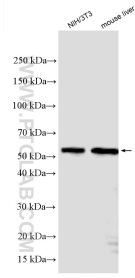
**Lagerungsbedingungen:**  
Bei -20°C lagern. Nach dem Versand ein Jahr lang stabil  
**Lagerungspuffer:**  
PBS mit 0.02% Natriumazid und 50% Glycerin pH 7.3.  
Aliquotieren ist nicht notwendig bei -20°C Lagerung

\*\*\* 20ul-Größen enthalten 0.1% BSA

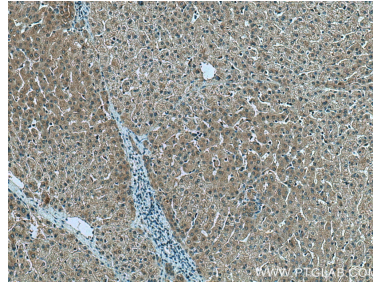
For technical support and original validation data for this product please contact:  
T: 1 (888) 4PTGLAB (1-888-478-4522) (toll free in USA), or 1(312) 455-8498 (outside USA)  
E: proteintech@ptglab.com  
W: ptglab.com

This product is exclusively available under Proteintech Group brand and is not available to purchase from any other manufacturer.

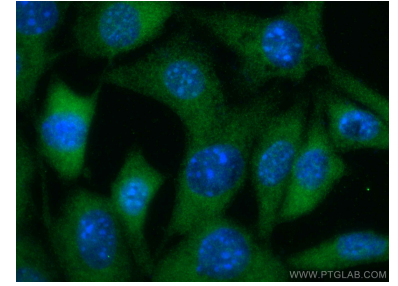
## Ausgewählte Validierungsdaten



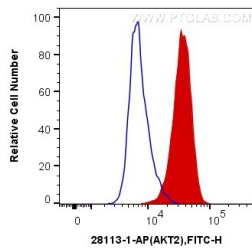
Various lysates were subjected to SDS PAGE followed by western blot with 28113-1-AP (AKT2 antibody) at dilution of 1:600 incubated at room temperature for 1.5 hours.



Immunohistochemical analysis of paraffin-embedded human liver tissue slide using 28113-1-AP (AKT2 antibody) at dilution of 1:200 (under 10x lens). Heat mediated antigen retrieval with Tris-EDTA buffer (pH 9.0).



Immunofluorescent analysis of (-20°C Ethanol) fixed NIH/3T3 cells using AKT2 antibody (28113-1-AP) at dilution of 1:100 and CoraLite®488-Conjugated AffiniPure Goat Anti-Rabbit IgG(H+L).



$1 \times 10^6$  NIH/3T3 cells were intracellularly stained with 0.4  $\mu$ g Anti-Human AKT2 (28113-1-AP) and CoraLite®488-Conjugated AffiniPure Goat Anti-Rabbit IgG(H+L) at dilution 1:1000 (red), or 0.4  $\mu$ g Control Antibody. Cells were fixed with 4% PFA and permeabilized with Flow Cytometry Perm Buffer (PF00011-C).