

Allgemeine Informationen

Katalog-Nr.: 28186-1-AP	GenBank-Zugangsnummer: BC096331	Reinigungsmethode: Antigen-Affinitätsreinigung
Größe: 150ul , Konzentration: 800 µg/ml von Nanodrop;	GeneID (NCBI): 5378	Empfohlene Verdünnungen: WB 1:1000-1:6000
Wirt: Kaninchen	Vollständiger Name: PMS1 postmeiotic segregation increased 1 (S. cerevisiae)	
Isotyp: IgG	Beobachtete Masse: 106 kDa	
Immunogen Katalognummer: AG28132		

Anwendungen

Geprüfte Anwendungen: WB, ELISA	Positivkontrollen: WB : Jurkat-Zellen, HeLa-Zellen, HepG2-Zellen, K-562-Zellen, MOLT-4-Zellen
Getestete Reaktivität: Human	

Hintergrundinformationen

PMS1 Homolog 1 is a member of the DNA mismatch repair enzymes (MMREs) which is to eliminate the mismatch of insertions and deletions as a consequence of DNA polymerase errors at DNA synthesis in eukaryotes. PMS1 and MLH1 could form a heterodimer MutLβ that belongs to MMREs (PMID:25619773). In the MMR system, the MutS complex recognise the DNA mispairs firstly, and then the Mlh1-Pms1 and other associated proteins such as PCNA, RFC, Exo1 were recruited, inducing Exonuclease 1 (Exo1)-dependent and -independent MMR pathways (PMID:24981171). Mutations in this gene cause hereditary nonpolyposis colorectal cancer (HNPCC), which is also known as Lynch syndrome. It was reported that PMS1 is a widely expressed protein and located in the nucleus. Alternative splicing allows for 4 isforms of PMS1 protein.

Lagerung

Lagerungsbedingungen:
Bei -20°C lagern. Nach dem Versand ein Jahr lang stabil
Lagerungspuffer:
PBS mit 0.02% Natriumazid und 50% Glycerin pH 7.3.
Aliquotieren ist nicht notwendig bei -20°C Lagerung

***** 20ul-Größen enthalten 0.1% BSA**

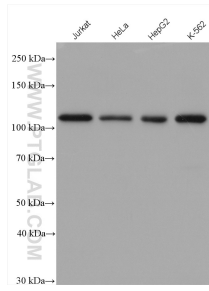
For technical support and original validation data for this product please contact:

T: 1 (888) 4PTGLAB (1-888-478-4522) (toll free
in USA), or 1(312) 455-8498 (outside USA)

E: proteintech@ptglab.com
W: ptglab.com

This product is exclusively available under Proteintech Group brand and is not available to purchase from any other manufacturer.

Ausgewählte Validierungsdaten



Various lysates were subjected to SDS PAGE followed by western blot with 28186-1-AP (PMS1 antibody) at dilution of 1:3000 incubated at room temperature for 1.5 hours.