

Allgemeine Informationen

Katalog-Nr.: 28272-1-AP	GenBank-Zugangsnummer: NM_000168	Reinigungsmethode: Antigen-Affinitätsreinigung
Größe: 150ul, Konzentration: 1000 µg/ml von 2737 Nanodrop und 467 µg/ml durch die Bradford-Methode mit BSA als Standard;	GeneID (NCBI): Vollständiger Name: GLI family zinc finger 3	Empfohlene Verdünnungen: WB 1:500-1:1000
Wirt: Kaninchen	Berechnete Masse: 170 aa	
Isotyp: IgG	Beobachtete Masse: 170-190 and 80-90 kDa	
Immunogen Katalognummer: AG28472		

Anwendungen

Geprüfte Anwendungen: WB, ELISA	Positivkontrollen: WB : HepG2-Zellen, SKOV-3-Zellen
In Publikationen genannte Anwendungen: WB	
Getestete Reaktivität: Human	
Zitierte Arten: Ratte	

Hintergrundinformationen

GLI3 belongs to the GLI C2H2-type zinc-finger protein family. GLI3 plays a role in limb and brain development. GLI3 is implicated in the transduction of SHH signal. Defects in GLI3 are the cause of Greig cephalo-poly-syndactyly syndrome (GCPS). Defects in GLI3 are a cause of Pallister-Hall syndrome (PHS). Defects in GLI3 are a cause of type A1/B postaxial polydactyly (PAPA1/PAPB). Defects in GLI3 are a cause of type IV preaxial polydactyly. Defects in GLI3 are the cause of acrocallosal syndrome (ACS). The antibody is specific to GLI3. At the molecular level, Gli3 is translated into a 190-kDa transcriptional activator (Gli3-190) that undergoes proteolytic processing into a truncated 83-kDa repressor (Gli3-83) lacking C-terminal activation domains. (PMID: 16705181)

Bemerkenswerte Veröffentlichungen

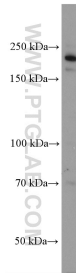
Verfasser	Pubmed ID	Journal	Anwendung
Quan Hong	34288810	Bioengineered	WB

Lagerung

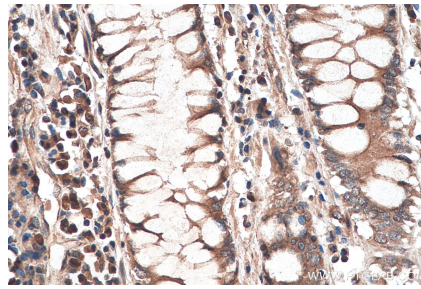
Lagerungsbedingungen:
Bei -20°C lagern. Nach dem Versand ein Jahr lang stabil
Lagerungspuffer:
PBS mit 0.02% Natriumazid und 50% Glycerin pH 7.3.
Aliquotieren ist nicht notwendig bei -20°C Lagerung

*** 20ul-Größen enthalten 0.1% BSA

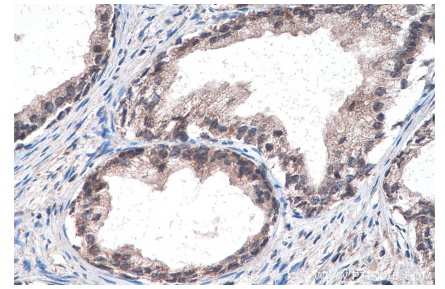
Ausgewählte Validierungsdaten



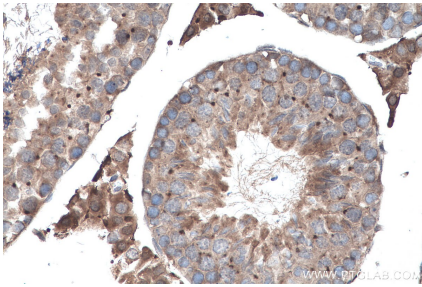
HepG2 cells were subjected to SDS PAGE followed by western blot with 28272-1-AP (GLI3 antibody) at dilution of 1:600 incubated at room temperature for 1.5 hours.



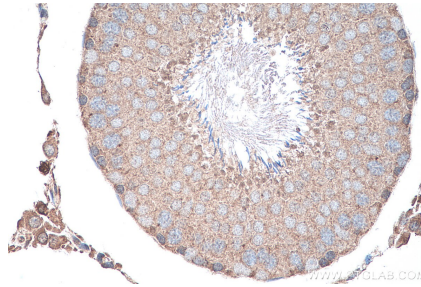
Immunohistochemical analysis of paraffin-embedded human colon cancer tissue slide using 28272-1-AP (GLI3 antibody) at dilution of 1:2000 (under 40x lens). Heat mediated antigen retrieval with Tris-EDTA buffer (pH 9.0).



Immunohistochemical analysis of paraffin-embedded human prostate cancer tissue slide using 28272-1-AP (GLI3 antibody) at dilution of 1:2000 (under 40x lens). Heat mediated antigen retrieval with Tris-EDTA buffer (pH 9.0).



Immunohistochemical analysis of paraffin-embedded mouse testis tissue slide using 28272-1-AP (GLI3 antibody) at dilution of 1:2000 (under 40x lens). Heat mediated antigen retrieval with Tris-EDTA buffer (pH 9.0).



Immunohistochemical analysis of paraffin-embedded rat testis tissue slide using 28272-1-AP (GLI3 antibody) at dilution of 1:2000 (under 40x lens). Heat mediated antigen retrieval with Tris-EDTA buffer (pH 9.0).