

Nur für Forschungszwecke

# EOMES/TRB2 Polyklonaler Antikörper



Katalog-Nr.: 28316-1-AP

## Allgemeine Informationen

<b>Katalog-Nr.:</b> 28316-1-AP	<b>GenBank-Zugangsnummer:</b> NM_001278182	<b>Reinigungsmethode:</b> Antigen-Affinitätsreinigung
<b>Größe:</b> 150ul, Konzentration: 700 µg/ml von Nanodrop und 300 µg/ml durch die Bradford-Methode mit BSA als Standard;	<b>GeneID (NCBI):</b> 8320	<b>Empfohlene Verdünnungen:</b> WB 1:500-1:1000
<b>Wirt:</b> Kaninchen	<b>Vollständiger Name:</b> eomesodermin homolog (Xenopus laevis)	
<b>Isotyp:</b> IgG	<b>Berechnete Masse:</b> 73 aa	
<b>Immunogen Katalognummer:</b> AG27634	<b>Beobachtete Masse:</b> 70-72 kDa	

## Anwendungen

<b>Geprüfte Anwendungen:</b> WB, ELISA	<b>Positivkontrollen:</b> WB: Maushirngewebe, Rattenhirngewebe
<b>Getestete Reaktivität:</b> Human, Maus, Ratte	

## Hintergrundinformationen

EOMES/TRB2 (also named Eomesodermin/Tbr2) encode T-box transcription factor expressed highly in the intermediate progenitor stage of the developing neuron. During migration of the neurons, radial glia divide and migrate towards the surface of the cerebral cortex, there are three stages of cellular development: radial glia, intermediate progenitors, and postmitotic projection neurons. Radial glia express Pax6, while intermediate progenitor cells express Eomesodermin/Tbr2, and postmitotic projection neurons express Tbr1 (PMID:15634788; PMID:16320258). This process also called neurogenesis, and demonstrated that Eomesodermin/Tbr2 has been implicated in neurodevelopment. According to the mouse model, several articles showed that EOMES/TRB2 KO mice having proliferating cells decreased and having smaller upper cortical layers and a smaller sub ventricular zone in the brain (PMID:18940588). What's more, Eomesodermin/Tbr2 has also been found participating in immune response (PMID:20713880).

## Lagerung

**Lagerungsbedingungen:**  
Bei -20°C lagern. Nach dem Versand ein Jahr lang stabil  
**Lagerungspuffer:**  
PBS mit 0.02% Natriumazid und 50% Glycerin pH 7.3.  
**Aliquotieren ist nicht notwendig bei -20°C Lagerung**

**\*\*\* 20ul-Größen enthalten 0.1% BSA**

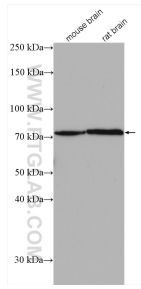
For technical support and original validation data for this product please contact:

T: 1 (888) 4PTGLAB (1-888-478-4522) (toll free in USA), or 1(312) 455-8498 (outside USA)

E: proteintech@ptglab.com  
W: ptglab.com

**This product is exclusively available under Proteintech Group brand and is not available to purchase from any other manufacturer.**

## Ausgewählte Validierungsdaten



Various lysates were subjected to SDS PAGE followed by western blot with 28316-1-AP (EOMES antibody) at dilution of 1:600 incubated at room temperature for 1.5 hours.