

Nur für Forschungszwecke

UBE2D1/2/3/4 Polyklonaler Antikörper



Katalog-Nr.: 28328-1-AP

1 Publikationen

Allgemeine Informationen

Katalog-Nr.: 28328-1-AP	GenBank-Zugangsnummer: BC033349	Reinigungsmethode: Antigen-Affinitätsreinigung
Größe: 150ul, Konzentration: 800 µg/ml von Nanodrop und 333 µg/ml durch die Bradford-Methode mit BSA als Standard;	GeneID (NCBI): 7322	Empfohlene Verdünnungen: WB 1:500-1:2000 IHC 1:250-1:1000
Wirt: Kaninchen	Vollständiger Name: ubiquitin-conjugating enzyme E2D 2 (UBC4/5 homolog, yeast)	
Isotyp: IgG	Berechnete Masse: 17 kDa	
Immunogen Katalognummer: AG28736	Beobachtete Masse: 14-17 kDa	

Anwendungen

Geprüfte Anwendungen: IHC, WB, ELISA	Positivkontrollen: WB : HEK-293-Zellen, Maushodengewebe, Mausnierengewebe, MCF-7-Zellen, NIH/3T3-Zellen, PC-12-Zellen, Rattennierengewebe
In Publikationen genannte Anwendungen: WB	IHC : humanes Mammakarzinomgewebe,
Getestete Reaktivität: Human, Maus, Ratte	
Zitierte Arten: Maus	
Hinweis-IHC: Antigendemaskierung mit TE-Puffer pH 9,0 empfohlen. (*) Wahlweise kann die Antigendemaskierung auch mit Citratpuffer pH 6,0 erfolgen.	

Hintergrundinformationen

Ubiquitination is a post-translational modification pathway or is part of the specific protein-degradation pathway by the 26S proteasome. Ubiquitination of a target protein involves multistep enzymatic reaction catalyzed by a cascade of enzymes including Ub-activating enzymes (E1s), Ub-conjugating enzymes (E2s) and Ub ligases (E3s) (PMID: 23542885). UBE2D family, which has 4 members named as UBE2D1/2/3/4, is an E2 ubiquitin-conjugating enzyme family in the ubiquitin-proteasome system. This antibody can recognize all the four members of UBE2D due to the high homology.

Bemerkenswerte Veröffentlichungen

Verfasser	Pubmed ID	Journal	Anwendung
Cheng-Jie Zhou	36513638	Nat Commun	WB

Lagerung

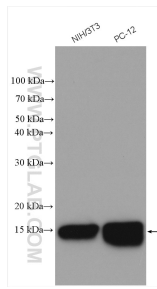
Lagerungsbedingungen:
Bei -20°C lagern. Nach dem Versand ein Jahr lang stabil
Lagerungspuffer:
PBS mit 0.02% Natriumazid und 50% Glycerin pH 7.3.
Aliquotieren ist nicht notwendig bei -20°C Lagerung

*** 20ul-Größen enthalten 0.1% BSA

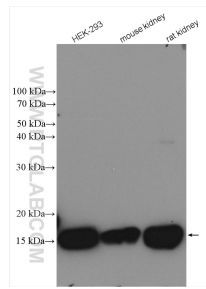
For technical support and original validation data for this product please contact:
T: 1 (888) 4PTGLAB (1-888-478-4522) (toll free in USA), or 1(312) 455-8498 (outside USA)
E: proteintech@ptglab.com
W: ptglab.com

This product is exclusively available under Proteintech Group brand and is not available to purchase from any other manufacturer.

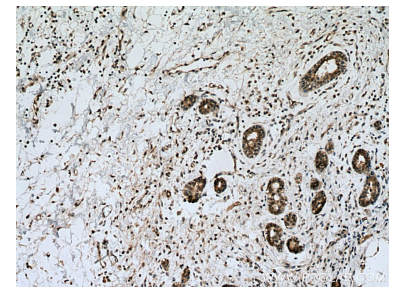
Ausgewählte Validierungsdaten



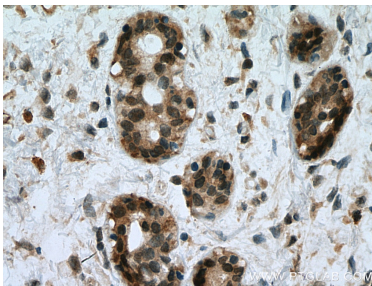
Various lysates were subjected to SDS PAGE followed by western blot with 28328-1-AP (UBE2D1/2/3/4 antibody) at dilution of 1:1000 incubated at room temperature for 1.5 hours.



Various lysates were subjected to SDS PAGE followed by western blot with 28328-1-AP (UBE2D1/2/3/4 antibody) at dilution of 1:1000 incubated at room temperature for 1.5 hours.



Immunohistochemical analysis of paraffin-embedded human breast cancer tissue slide using 28328-1-AP (UBE2D1/2/3/4 antibody) at dilution of 1:500 (under 10x lens). Heat mediated antigen retrieval with Tris-EDTA buffer (pH 9.0).



Immunohistochemical analysis of paraffin-embedded human breast cancer tissue slide using 28328-1-AP (UBE2D1/2/3/4 antibody) at dilution of 1:500 (under 40x lens). Heat mediated antigen retrieval with Tris-EDTA buffer (pH 9.0).