

Nur für Forschungszwecke

Beta TRCP Polyklonaler Antikörper

Katalog-Nr.:28393-1-AP



Allgemeine Informationen

Katalog-Nr.: 28393-1-AP	GenBank-Zugangsnummer: BC027994	Reinigungsmethode: Antigen-Affinitätsreinigung
Größe: 150ul , Konzentration: 800 µg/ml von Nanodrop;	GeneID (NCBI): 8945	Empfohlene Verdünnungen: WB 1:2000-1:10000 IHC 1:50-1:500
Wirt: Kaninchen	Vollständiger Name: beta-transducin repeat containing	
Isotyp: IgG	Berechnete Masse: 605 aa, 69 kDa	
Immunogen Katalognummer: AG28739	Beobachtete Masse: 60-65 kDa	

Anwendungen

Geprüfte Anwendungen:

IHC, WB, ELISA

Getestete Reaktivität:

Human, Maus, Ratte

Hinweis-IHC: Antigendemaskierung mit TE-Puffer pH 9,0 empfohlen. (*) Wahlweise kann die Antigendemaskierung auch mit Citratpuffer pH 6,0 erfolgen.

Positivkontrollen:

WB : HEK-293T-Zellen, Maushirngewebe, NIH/3T3-Zellen, Ramos-Zellen, Rattenhirngewebe, U-251-Zellen

IHC : Maushodengewebe,

Hintergrundinformationen

BTRC, also named as BTRCP, FBW1A, and FBXW1A, is an F-box family protein. It is a Substrate recognition component of an SCF (SKP1-CUL1-F-box protein) E3 ubiquitin-protein ligase complex which mediates the ubiquitination and subsequent proteasomal degradation of target proteins. BTRC targets many important proteins with diverse functions, such as p53, HRAS, NF-kappa-B p105 subunit, ATF4, SMAD3, SMAD4, CDC25A, DLG1, FBXO5, and the cell cycle checkpoint protein claspin, for ubiquitin-mediated degradation. It is required for the activation of NFkB-mediated transcription by IL1B, MAP3K14, MAP3K1, IKKB, and TNF. Required for proteolytic processing of GLI3.

Lagerung

Lagerungsbedingungen:

Bei -20°C lagern. Nach dem Versand ein Jahr lang stabil

Lagerungspuffer:

PBS mit 0.02% Natriumazid und 50% Glycerin pH 7.3.

Aliquotieren ist nicht notwendig bei -20°C Lagerung

*** 20ul-Größen enthalten 0.1% BSA

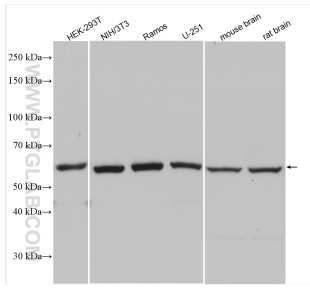
For technical support and original validation data for this product please contact:

T: 1 (888) 4PTGLAB (1-888-478-4522) (toll free in USA), or 1(312) 455-8498 (outside USA)

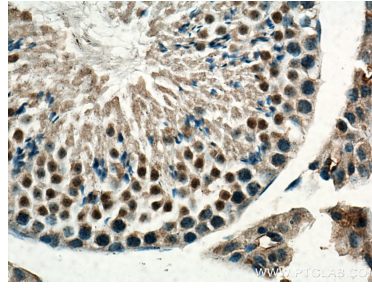
E: proteintech@ptglab.com
W: ptglab.com

This product is exclusively available under Proteintech Group brand and is not available to purchase from any other manufacturer.

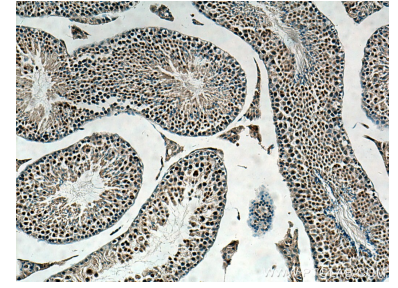
Ausgewählte Validierungsdaten



Various lysates were subjected to SDS PAGE followed by western blot with 28393-1-AP (Beta TRCP antibody) at dilution of 1:5000 and incubated at room temperature for 1.5 hours.



Immunohistochemical analysis of paraffin-embedded mouse testis tissue slide using 28393-1-AP (BETA-TRCP,BTRC antibody) at dilution of 1:200 (under 40x lens). Heat mediated antigen retrieval with Tris-EDTA buffer (pH 9.0).



Immunohistochemical analysis of paraffin-embedded mouse testis tissue slide using 28393-1-AP (BETA-TRCP,BTRC antibody) at dilution of 1:200 (under 10x lens). Heat mediated antigen retrieval with Tris-EDTA buffer (pH 9.0).