

Allgemeine Informationen

Katalog-Nr.: 28402-1-AP	GenBank-Zugangsnummer: BC109104	Reinigungsmethode: Antigen-Affinitätsreinigung
Größe: 150ul , Konzentration: 900 µg/ml von Nanodrop;	GeneID (NCBI): 54910	Empfohlene Verdünnungen: WB 1:1000-1:4000 IHC 1:50-1:500
Wirt: Kaninchen	Vollständiger Name: sema domain, immunoglobulin domain (Ig), transmembrane domain (TM) and short cytoplasmic domain, (semaphorin) 4C	
Isotyp: IgG	Berechnete Masse: 833 aa, 93 kDa	
Immunogen Katalognummer: AG29143	Beobachtete Masse: 93 kDa	

Anwendungen

Geprüfte Anwendungen:

IHC, WB, ELISA

Getestete Reaktivität:

Human, Maus, Ratte

Hinweis-IHC: Antigenmaskierung mit TE-Puffer pH 9,0 empfohlen. (*) Wahlweise kann die Antigenmaskierung auch mit Citratpuffer pH 6,0 erfolgen.

Positivkontrollen:

WB : fetales humanes Hirngewebe, Maushirngewebe, Rattenhirngewebe

IHC : humanes Ovarialkarzinomgewebe, humanes Magenkrebsgewebe

Hintergrundinformationen

SEMA4C is a member of transmembrane semaphorin proteins which regulate axonal guidance in the developing nervous system. Furthermore, studies have demonstrated that sema4C was also implicated in biological events outside the nervous system, such as cell migration, tumor development, and terminal myogenic differentiation (PMID: 36010604). SEMA4C is highly expressed in breast, lung, cervical, and liver cancers. SEMA4C is involved in oncogenic signaling and is a potential therapeutic target for invasive breast cancer, hepatocellular carcinoma, glioma, and osteosarcoma (PMID: 33177246).

Lagerung

Lagerungsbedingungen:

Bei -20°C lagern. Nach dem Versand ein Jahr lang stabil

Lagerungspuffer:

PBS mit 0.02% Natriumazid und 50% Glycerin pH 7.3.

Aliquotieren ist nicht notwendig bei -20°C Lagerung

*** 20ul-Größen enthalten 0.1% BSA

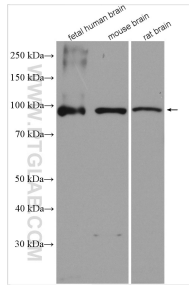
For technical support and original validation data for this product please contact:

T: 1 (888) 4PTGLAB (1-888-478-4522) (toll free
in USA), or 1(312) 455-8498 (outside USA)

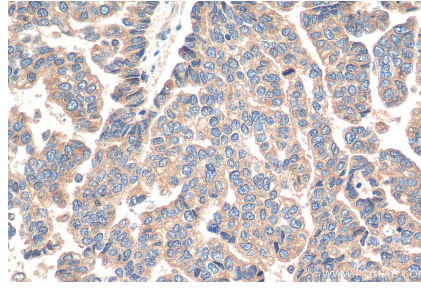
E: proteintech@ptglab.com
W: ptglab.com

This product is exclusively available under Proteintech Group brand and is not available to purchase from any other manufacturer.

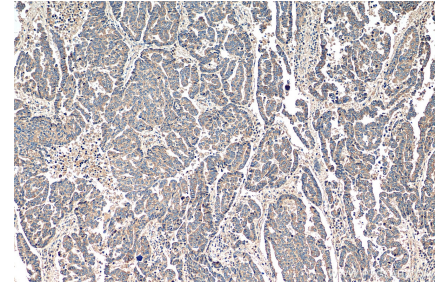
Ausgewählte Validierungsdaten



Various lysates were subjected to SDS PAGE followed by western blot with 28402-1-AP (SEMA4C antibody) at dilution of 1:2000 incubated at room temperature for 1.5 hours.



Immunohistochemical analysis of paraffin-embedded human ovary tumor tissue slide using 28402-1-AP (SEMA4C antibody) at dilution of 1:200 (under 40x lens). Heat mediated antigen retrieval with Tris-EDTA buffer (pH 9.0).



Immunohistochemical analysis of paraffin-embedded human ovary tumor tissue slide using 28402-1-AP (SEMA4C antibody) at dilution of 1:200 (under 10x lens). Heat mediated antigen retrieval with Tris-EDTA buffer (pH 9.0).