

Nur für Forschungszwecke

KMT2C Polyklonaler Antikörper

Katalog-Nr.: 28437-1-AP

2 Publikationen



Allgemeine Informationen

Katalog-Nr.: 28437-1-AP	GenBank-Zugangsnummer: NM_170606	Reinigungsmethode: Antigen-Affinitätsreinigung
Größe: 150ul, Konzentration: 500 µg/ml von Nanodrop;	GeneID (NCBI): 58508	Empfohlene Verdünnungen: WB 1:500-1:1000
Wirt: Kaninchen	Vollständiger Name: myeloid/lymphoid or mixed-lineage leukemia 3	
Isotyp: IgG	Berechnete Masse: 541 kDa	
Immunogen Katalognummer: AG28875	Beobachtete Masse: 269 kDa	

Anwendungen

Geprüfte Anwendungen: WB, ELISA	Positivkontrollen: WB : K-562-Zellen,
In Publikationen genannte Anwendungen: ChIP, WB	
Getestete Reaktivität: Human	
Zitierte Arten: Human	

Hintergrundinformationen

Lysine (K)-specific methyltransferase 2C (KMT2C, also known as MLL3) belongs to the mixed-lineage leukemia (MLL) family of histone methyltransferases which methylate the histone 3 tail at lysine 4 (H3K4) as part of the complex proteins associated with Set 1 (COMPASS) complex. Although originally identified as oncogenic fusions in leukemia, genome-wide mutation studies have revealed frequent, presumably loss-of-function, mutations in various members of the MLL family, including MLL2/KMT2B, MLL3/KMT2C, and MLL4/KMT2D in a variety of malignancies, particularly solid tumors. Mechanistic studies of KMT2C in normal cells have focused primarily on its role in enhancer regulation by deposition of H3K4me1 marks.

Bemerkenswerte Veröffentlichungen

Verfasser	Pubmed ID	Journal	Anwendung
Juan-Juan Li	34999393	Int Immunopharmacol	WB
Tanjing Song	36935008	J Biol Chem	ChIP

Lagerung

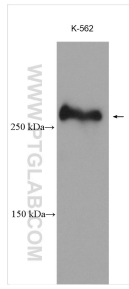
Lagerungsbedingungen:
Bei -20°C lagern. Nach dem Versand ein Jahr lang stabil
Lagerungspuffer:
PBS mit 0.02% Natriumazid und 50% Glycerin pH 7.3.
Aliquotieren ist nicht notwendig bei -20°C Lagerung

*** 20ul-Größen enthalten 0.1% BSA

For technical support and original validation data for this product please contact:
T: 1 (888) 4PTGLAB (1-888-478-4522) (toll free in USA), or 1(312) 455-8498 (outside USA)
E: proteintech@ptglab.com
W: ptglab.com

This product is exclusively available under Proteintech Group brand and is not available to purchase from any other manufacturer.

Ausgewählte Validierungsdaten



K-562 cells were subjected to SDS PAGE followed by western blot with 28437-1-AP (KMT2C antibody) at dilution of 1:500 incubated at room temperature for 1.5 hours.