

Nur für Forschungszwecke

Involucrin Polyklonaler Antikörper

Katalog-Nr.:28462-1-AP

6 Publikationen



Allgemeine Informationen

Katalog-Nr.: 28462-1-AP	GenBank-Zugangsnummer: NM_005547	Reinigungsmethode: Antigen-Affinitätsreinigung
Größe: 150ul , Konzentration: 450 µg/ml von Nanodrop;	GeneID (NCBI): 3713	Empfohlene Verdünnungen: WB 1:1000-1:4000 IHC 1:50-1:500 IF 1:50-1:500
Wirt: Kaninchen	Vollständiger Name: involucrin	
Isotyp: IgG	Berechnete Masse: 68 kDa	
Immunogen Katalognummer: AG29585	Beobachtete Masse: 120 kDa	

Anwendungen

Geprüfte Anwendungen: FC, IF, IHC, WB, ELISA	Positivkontrollen: WB : A431-Zellen, HT-1080.Zellen, HT-29-Zellen
In Publikationen genannte Anwendungen: IF, IHC, WB	IHC : humanes Tonsillitisgewebe, humanes Ösophaguskarzinomgewebe
Getestete Reaktivität: Human	IF : A431-Zellen,
Zitierte Arten: Human, Maus	

Hinweis-IHC: Antigenemaskierung mit TE-Puffer pH 9,0 empfohlen. (*) Wahlweise kann die Antigenemaskierung auch mit Citratpuffer pH 6,0 erfolgen.

Hintergrundinformationen

Involucrin is a protein precursor of the epidermal cornified envelope that is assembled in the outermost layers of the epidermis. Involucrin expression is restricted to the suprabasal epidermal layers (spinous and granular layers) during normal keratinocyte differentiation and is a useful marker of terminal differentiation. The predicted MW of involucrin is 68 kDa, but it also forms 120 kDa dimers, while different reports provided variable results ranging from 90-140 kDa. (PMID: 11099111, 1503502, 12150517)

Bemerkenswerte Veröffentlichungen

Verfasser	Pubmed ID	Journal	Anwendung
Zhenzhuo Li	34562563	J Ethnopharmacol	WB,IHC
Yushi Katsuyama	36047208	Biol Pharm Bull	WB
Jie-Fang Gao	35533554	Int Immunopharmacol	IF

Lagerung

Lagerungsbedingungen:
Bei -20°C lagern. Nach dem Versand ein Jahr lang stabil

Lagerungspuffer:
PBS mit 0.02% Natriumazid und 50% Glycerin pH 7.3.

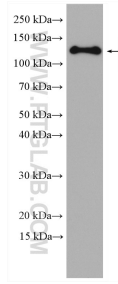
Aliquotieren ist nicht notwendig bei -20°C Lagerung

*** 20ul-Größen enthalten 0.1% BSA

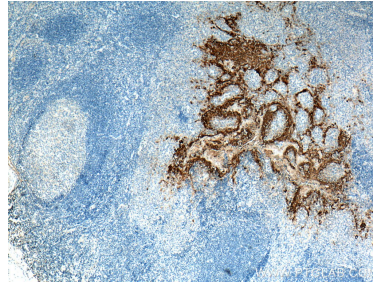
For technical support and original validation data for this product please contact:
T: 1 (888) 4PTGLAB (1-888-478-4522) (toll free in USA), or 1(312) 455-8498 (outside USA)
E: proteintech@ptglab.com
W: ptglab.com

This product is exclusively available under Proteintech Group brand and is not available to purchase from any other manufacturer.

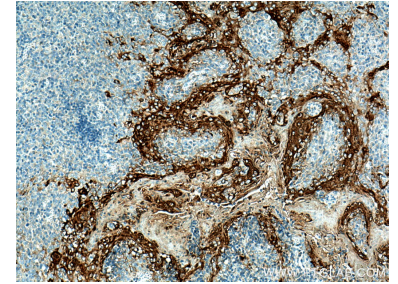
Ausgewählte Validierungsdaten



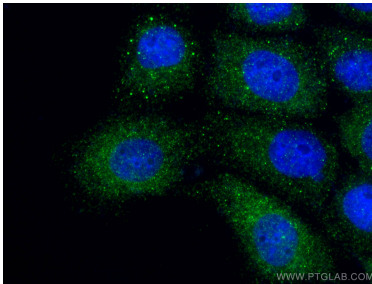
A431 cells were subjected to SDS PAGE followed by western blot with 28462-1-AP (Involucrin antibody) at dilution of 1:2000 incubated at room temperature for 1.5 hours.



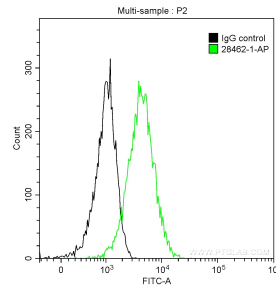
Immunohistochemical analysis of paraffin-embedded human tonsillitis tissue slide using 28462-1-AP (Involucrin antibody) at dilution of 1:200 (under 4x lens). Heat mediated antigen retrieval with Tris-EDTA buffer (pH 9.0).



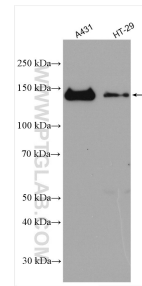
Immunohistochemical analysis of paraffin-embedded human tonsillitis tissue slide using 28462-1-AP (Involucrin antibody) at dilution of 1:200 (under 10x lens). Heat mediated antigen retrieval with Tris-EDTA buffer (pH 9.0).



Immunofluorescent analysis of (4% PFA) fixed A431 cells using Involucrin antibody (28462-1-AP) at dilution of 1:200 and CoraLite®488-Conjugated AffiniPure Goat Anti-Rabbit IgG(H+L).



1×10^6 A431 cells were intracellularly stained with 0.2 ug Anti-Human Involucrin (28462-1-AP) and CoraLite®488-Conjugated AffiniPure Goat Anti-Rabbit IgG(H+L) at dilution 1:1000 (green), and 0.2 ug Control Antibody. Cells were fixed with 90% MeOH.



Various lysates were subjected to SDS PAGE followed by western blot with 28462-1-AP (Involucrin antibody) at dilution of 1:10000 incubated at room temperature for 1.5 hours.