

Nur für Forschungszwecke

F4/80 Polyklonaler Antikörper

Katalog-Nr.: 28463-1-AP

106 Publikationen



Allgemeine Informationen

Katalog-Nr.: 28463-1-AP	GenBank-Zugangsnummer: NM_010130	Reinigungsmethode: Antigen-Affinitätsreinigung
Größe: 150ul, Konzentration: 500 µg/ml von Nanodrop;	GeneID (NCBI): 13733	Empfohlene Verdünnungen: IHC 1:1000-1:4000 IF 1:50-1:500
Wirt: Kaninchen	Vollständiger Name: EGF-like module containing, mucin-like, hormone receptor-like sequence	
Isotyp: IgG	Berechnete Masse: 102 kDa	
Immunogen Katalognummer: AG28252		

Anwendungen

Geprüfte Anwendungen: FC, IF, IHC, ELISA	Positivkontrollen:
In Publikationen genannte Anwendungen: FC, IF, IHC, WB	IHC: Mausmilzgewebe, Mauslebergewebe, Rattenlebergewebe, Rattenmilzgewebe
Getestete Reaktivität: Maus, Ratte	IF: Mausmilzgewebe, Mauslebergewebe
Zitierte Arten: Hausschwein, Human, Maus, Ratte	
Hinweis-IHC: Antigendemaskierung mit TE-Puffer pH 9,0 empfohlen. (*) Wahlweise kann die Antigendemaskierung auch mit Citratpuffer pH 6,0 erfolgen.	

Hintergrundinformationen

Mouse F4/80, also named as EMR1 and Gpf480, is a 160kd cell surface glycoprotein which is a member of the EGF TM7 family. The F4/80 molecule is solely expressed on the surface of macrophages and serves as a marker for mature macrophage tissues, including Kupffer cells in liver, splenic red pulp macrophages, brain microglia, gut lamina propria and Langerhans cells in the skin. The function of F4/80 is unclear, but it is speculated to be involved in macrophage adhesion events, cell migration or as a G protein-coupled signaling component of macrophages.

Bemerkenswerte Veröffentlichungen

Verfasser	Pubmed ID	Journal	Anwendung
Yiran Song	36156376	Liver Int	IF
Tingting Qin	36225585	Front Pharmacol	IHC
Chao Jin	36188529	Front Pharmacol	IHC

Lagerung

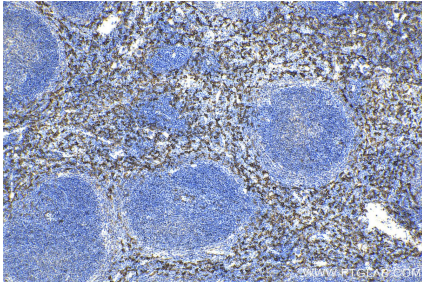
Lagerungsbedingungen:
Bei -20°C lagern. Nach dem Versand ein Jahr lang stabil
Lagerungspuffer:
PBS mit 0.02% Natriumazid und 50% Glycerin pH 7.3.
Aliquotieren ist nicht notwendig bei -20°C Lagerung

*** 20ul-Größen enthalten 0.1% BSA

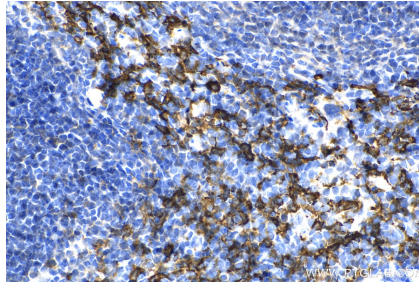
For technical support and original validation data for this product please contact:
T: 1 (888) 4PTGLAB (1-888-478-4522) (toll free in USA), or 1(312) 455-8498 (outside USA)
E: proteintech@ptglab.com
W: ptglab.com

This product is exclusively available under Proteintech Group brand and is not available to purchase from any other manufacturer.

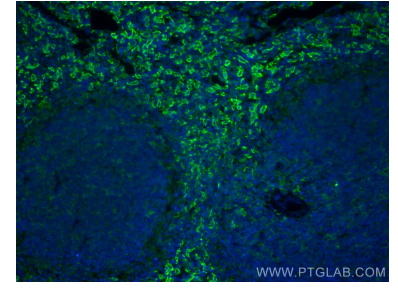
Ausgewählte Validierungsdaten



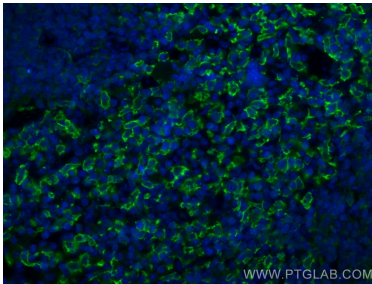
Immunohistochemical analysis of paraffin-embedded mouse spleen tissue slide using 28463-1-AP (F4/80 antibody) at dilution of 1:2000 (under 10x lens). Heat mediated antigen retrieval with Tris-EDTA buffer (pH 9.0).



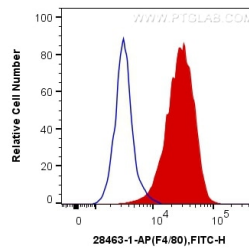
Immunohistochemical analysis of paraffin-embedded mouse spleen tissue slide using 28463-1-AP (F4/80 antibody) at dilution of 1:2000 (under 40x lens). Heat mediated antigen retrieval with Tris-EDTA buffer (pH 9.0).



Immunofluorescent analysis of (4% PFA) fixed mouse spleen tissue using F4/80 antibody (28463-1-AP) at dilution of 1:200 and CoraLite@488-Conjugated AffiniPure Goat Anti-Rabbit IgG(H+L).



Immunofluorescent analysis of (4% PFA) fixed mouse spleen tissue using F4/80 antibody (28463-1-AP) at dilution of 1:200 and CoraLite@488-Conjugated AffiniPure Goat Anti-Rabbit IgG(H+L).



1x10⁶ RAW 264.7 cells were intracellularly stained with 0.4 ug Anti-Mouse F4/80 (28463-1-AP) and CoraLite@488-Conjugated AffiniPure Goat Anti-Rabbit IgG(H+L) at dilution 1:1000 (red), or 0.4 ug Control Antibody. Cells were fixed with 4% PFA and permeabilized with Flow Cytometry Perm Buffer (PF00011-C).