

Nur für Forschungszwecke

# PHF17 Polyklonaler Antikörper

Katalog-Nr.: 28472-1-AP

Vorgestelltes Produkt



## Allgemeine Informationen

Katalog-Nr.:

28472-1-AP

Größe:

150ul, Konzentration: 800 µg/ml von  
Nanodrop;

Wirt:

Kaninchen

Isotyp:

IgG

Immunogen Katalognummer:

AG29675

GenBank-Zugangsnummer:

BC032376

GeneID (NCBI):

79960

Vollständiger Name:

PHD finger protein 17

Berechnete Masse:

96 kDa

Beobachtete Masse:

65, 100-110 kDa

Reinigungsmethode:

Antigen-Affinitätsreinigung

Empfohlene Verdünnungen:

WB 1:1000-1:5000

IF 1:50-1:500

## Anwendungen

Geprüfte Anwendungen:

IF, WB, ELISA

Getestete Reaktivität:

Human

Positivkontrollen:

WB: Jurkat-Zellen, A549-Zellen, HepG2-Zellen, MCF-7-Zellen

IF: HeLa-Zellen,

## Hintergrundinformationen

PHF17, also named as JADE1 and KIAA1807, belongs to the JADE family. PHF17 codes for the Jade-1 protein. This protein interacts with histone acetyltransferase HBO1 and promotes histone acetylation in chromatin to regulate DNA replication and gene transcription. PHF17 is mostly expressed in the small intestine, prostate, mammary gland and kidney. PHF17 is involved in mitosis, meiosis and tumor suppression (PMID: 28134766). PHF17 has 3 isoforms with the molecular mass of 58 and 94-96 kDa. With modification, the MW of PHF17 may be migrated to about 65 and 100-110 kDa.

## Lagerung

Lagerungsbedingungen:

Bei -20°C lagern. Nach dem Versand ein Jahr lang stabil

Lagerungspuffer:

PBS mit 0.02% Natriumazid und 50% Glycerin pH 7.3.

Aliquotieren ist nicht notwendig bei -20°C Lagerung

\*\*\* 20ul-Größen enthalten 0.1% BSA

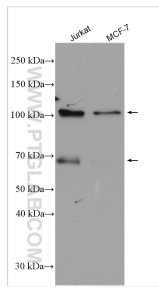
For technical support and original validation data for this product please contact:

T: 1 (888) 4PTGLAB (1-888-478-4522) (toll free  
in USA), or 1(312) 455-8498 (outside USA)

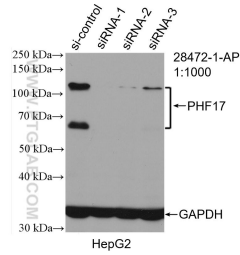
E: [proteintech@ptglab.com](mailto:proteintech@ptglab.com)  
W: [ptglab.com](http://ptglab.com)

This product is exclusively available under Proteintech Group brand and is not available to purchase from any other manufacturer.

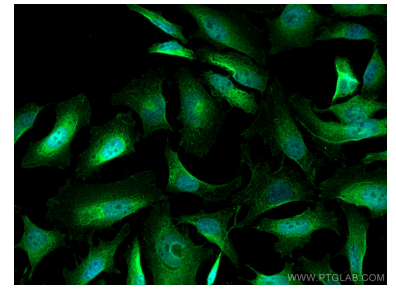
## Ausgewählte Validierungsdaten



Various lysates were subjected to SDS PAGE followed by western blot with 28472-1-AP (PHF17 antibody) at dilution of 1:2500 incubated at room temperature for 1.5 hours.



WB result of PHF17 antibody (28472-1-AP; 1:1000; incubated at room temperature for 1.5 hours) with sh-Control and sh-PHF17 transfected HepG2 cells.



Immunofluorescent analysis of (4% PFA) fixed HeLa cells using PHF17 antibody (28472-1-AP) at dilution of 1:200 and CoraLite®488-Conjugated AffiniPure Goat Anti-Rabbit IgG(H+L).