

Nur für Forschungszwecke

# FLNC Polyklonaler Antikörper

Katalog-Nr.:28492-1-AP



## Allgemeine Informationen

<b>Katalog-Nr.:</b> 28492-1-AP	<b>GenBank-Zugangsnummer:</b> NM_001458	<b>Reinigungsmethode:</b> Antigen-Affinitätsreinigung
<b>Größe:</b> 150ul , Konzentration: 300 µg/ml von Nanodrop;	<b>GeneID (NCBI):</b> 2318	<b>Empfohlene Verdünnungen:</b> WB 1:500-1:2000
<b>Wirt:</b> Kaninchen	<b>Vollständiger Name:</b> filamin C, gamma (actin binding protein 280)	
<b>Isotyp:</b> IgG	<b>Berechnete Masse:</b> 291 kDa	
<b>Immunogen Katalognummer:</b> AG29328	<b>Beobachtete Masse:</b> 280-300 kDa	

## Anwendungen

<b>Geprüfte Anwendungen:</b> WB,ELISA	<b>Positivkontrollen:</b> WB : SGC-7901-Zellen,
<b>Getestete Reaktivität:</b> Human	

## Hintergrundinformationen

Filamin C (FLNC; also known as  $\gamma$ -FLN; ABP-L; FLN2), a muscle-specific filamin and a large actin-cross-linking protein. Human filamins are ~280 kDa homodimers, each monomer consisting of an N-terminal actin-binding domain followed by 24 immunoglobulin (Ig)-like domains (d1 to d24), the last of which mediates dimerization. FLNC is specifically expressed in cardiomyocytes and skeletal myocytes and is involved in the maintenance of structural integrity. High filamin C associated with better prognosis of prostate cancer, leukemia and breast cancer patients. ( PMID: 25577646, PMID: 30867563, PMID: 31131323)

## Lagerung

**Lagerungsbedingungen:**  
Bei -20°C lagern. Nach dem Versand ein Jahr lang stabil  
**Lagerungspuffer:**  
PBS mit 0.02% Natriumazid und 50% Glycerin pH 7.3.  
Aliquotieren ist nicht notwendig bei -20°C Lagerung

\*\*\* 20ul-Größen enthalten 0.1% BSA

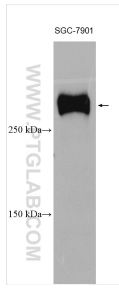
For technical support and original validation data for this product please contact:

T: 1 (888) 4PTGLAB (1-888-478-4522) (toll free  
in USA), or 1(312) 455-8498 (outside USA)

E: [proteintech@ptglab.com](mailto:proteintech@ptglab.com)  
W: [ptglab.com](http://ptglab.com)

This product is exclusively available under Proteintech Group brand and is not available to purchase from any other manufacturer.

## Ausgewählte Validierungsdaten



SGC-7901 cells were subjected to SDS PAGE followed by western blot with 28492-1-AP (filamin-c antibody) at dilution of 1:1000 incubated at room temperature for 1.5 hours.