

Nur für Forschungszwecke

Alpha-2-antiplasmin Polyklonaler Antikörper



Katalog-Nr.:28549-1-AP

Allgemeine Informationen

Katalog-Nr.: 28549-1-AP	GenBank-Zugangsnummer: BC031592	Reinigungsmethode: Antigen-Affinitätsreinigung
Größe: 150ul , Konzentration: 600 µg/ml von Nanodrop;	GeneID (NCBI): 5345	Empfohlene Verdünnungen: WB 1:1000-1:4000 IHC 1:50-1:500 IF 1:50-1:500
Wirt: Kaninchen	Vollständiger Name: serpin peptidase inhibitor, clade F (alpha-2 antiplasmin, pigment epithelium derived factor), member 2	
Isotyp: IgG	Berechnete Masse: 491 aa, 55 kDa	
Immunogen Katalognummer: AG29670	Beobachtete Masse: 55 kDa	

Anwendungen

Geprüfte Anwendungen: IF, IHC, WB, ELISA	Positivkontrollen: WB : HepG2-Zellen, Mauslebergewebe, Rattenlebergewebe, THP-1-Zellen
Getestete Reaktivität: Human, Maus, Ratte	IHC : Mauslebergewebe,
Hinweis-IHC: Antigendemaskierung mit TE-Puffer pH 9,0 empfohlen. (*) Wahlweise kann die Antigendemaskierung auch mit Citratpuffer pH 6,0 erfolgen.	IF : HepG2-Zellen,

Hintergrundinformationen

SERPINF2, also termed Alpha-2-antiplasmin(a2-AP), a member of the serpin family of serine protease inhibitors. SERPINF2 is a major inhibitor of plasmin, which degrades fibrin and various other proteins. Consequently, the proper function of this gene has a major role in regulating the blood clotting pathway. Mutations in SERPINF2 result in alpha-2-plasmin inhibitor deficiency, which is characterized by severe hemorrhagic diathesis.

Lagerung

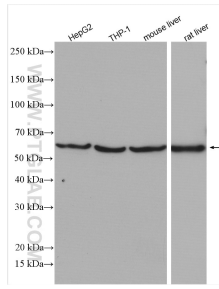
Lagerungsbedingungen:
Bei -20°C lagern. Nach dem Versand ein Jahr lang stabil
Lagerungspuffer:
PBS mit 0.02% Natriumazid und 50% Glycerin pH 7.3.
Aliquotieren ist nicht notwendig bei -20°C Lagerung

*** 20ul-Größen enthalten 0.1% BSA

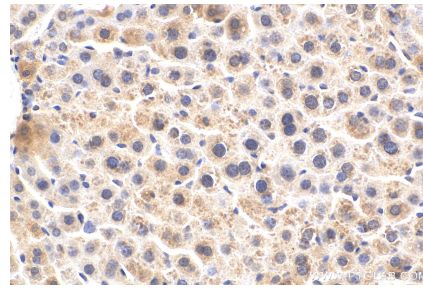
For technical support and original validation data for this product please contact:
T: 1 (888) 4PTGLAB (1-888-478-4522) (toll free in USA), or 1(312) 455-8498 (outside USA)
E: proteintech@ptglab.com
W: ptglab.com

This product is exclusively available under Proteintech Group brand and is not available to purchase from any other manufacturer.

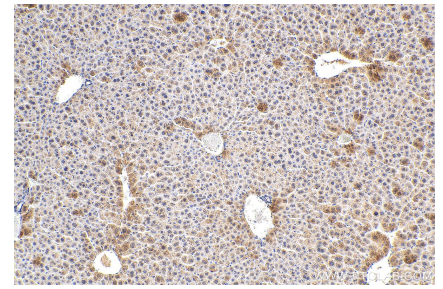
Ausgewählte Validierungsdaten



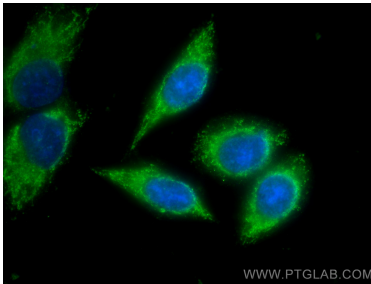
Various lysates were subjected to SDS PAGE followed by western blot with 28549-1-AP (Alpha-2-antiplasmin antibody) at dilution of 1:2000 incubated at room temperature for 1.5 hours.



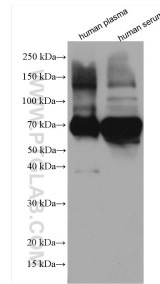
Immunohistochemical analysis of paraffin-embedded mouse liver tissue slide using 28549-1-AP (Alpha-2-antiplasmin antibody) at dilution of 1:200 (under 40x lens). Heat mediated antigen retrieval with Tris-EDTA buffer (pH 9.0).



Immunohistochemical analysis of paraffin-embedded mouse liver tissue slide using 28549-1-AP (Alpha-2-antiplasmin antibody) at dilution of 1:200 (under 10x lens). Heat mediated antigen retrieval with Tris-EDTA buffer (pH 9.0).



Immunofluorescent analysis of (-20°C Ethanol) fixed HepG2 cells using Alpha-2-antiplasmin antibody (28549-1-AP) at dilution of 1:200 and CoraLite®488-Conjugated AffiniPure Goat Anti-Rabbit IgG(H+L).



human plasma were subjected to SDS PAGE followed by western blot with 28549-1-AP (Alpha-2-antiplasmin antibody) at dilution of 1:2000 incubated at room temperature for 1.5 hours.