

Nur für Forschungszwecke

Siglec-15 Polyklonaler Antikörper

Katalog-Nr.:28594-1-AP



Allgemeine Informationen

Katalog-Nr.: 28594-1-AP	GenBank-Zugangsnummer: NM_213602	Reinigungsmethode: Antigen-Affinitätsreinigung
Größe: 150ul , Konzentration: 700 µg/ml von Nanodrop;	GeneID (NCBI): 284266	Empfohlene Verdünnungen: WB 1:1000-1:5000
Wirt: Kaninchen	Vollständiger Name: sialic acid binding Ig-like lectin 15	
Isotyp: IgG	Berechnete Masse: 36 kDa	
Immunogen Katalognummer: AG29829	Beobachtete Masse: 38-40 kDa	

Anwendungen

Geprüfte Anwendungen: WB, ELISA	Positivkontrollen: WB : PC-3-Zellen, U-87 MG-Zellen
Getestete Reaktivität: Human	

Hintergrundinformationen

Sialic acid binding Ig-like lectin 15 (Siglec-15) is a member of the Siglec family of glycan-recognition proteins. Siglec-15 is a type-I transmembrane protein consisting of two immunoglobulin (Ig)-like domains, a transmembrane domain, and a short cytoplasmic tail (PMID: 17483134). It is mainly expressed on a subset of myeloid lineage cells and can be upregulated in many cancers (PMID: 32939323). Siglec-15 has been reported as a immune suppressor and a potential target for normalization cancer immunotherapy (PMID: 30833750). Siglec-15 has a calculated molecular weight of 36 kDa. It has been detected at 38-40 kDa due to glycosylation (PMID: 32921411).

Lagerung

Lagerungsbedingungen:
Bei -20°C lagern. Nach dem Versand ein Jahr lang stabil
Lagerungspuffer:
PBS mit 0.02% Natriumazid und 50% Glycerin pH 7.3.
Aliquotieren ist nicht notwendig bei -20°C Lagerung

***** 20ul-Größen enthalten 0.1% BSA**

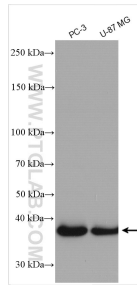
For technical support and original validation data for this product please contact:

T: 1 (888) 4PTGLAB (1-888-478-4522) (toll free in USA), or 1(312) 455-8498 (outside USA)

E: proteintech@ptglab.com
W: ptglab.com

This product is exclusively available under Proteintech Group brand and is not available to purchase from any other manufacturer.

Ausgewählte Validierungsdaten



Various lysates were subjected to SDS PAGE followed by western blot with 28594-1-AP (Siglec-15 antibody) at dilution of 1:2500 incubated at room temperature for 1.5 hours.