

Nur für Forschungszwecke

Cyclin B1 Polyklonaler Antikörper

Katalog-Nr.:28603-1-AP

Vorgestelltes Produkt

32 Publikationen



Allgemeine Informationen

Katalog-Nr.: 28603-1-AP	GenBank-Zugangsnummer: BC006510	Reinigungsmethode: Antigen-Affinitätsreinigung
Größe: 150ul , Konzentration: 900 µg/ml von Nanodrop und 400 µg/ml durch die Bradford-Methode mit BSA als Standard;	GeneID (NCBI): 891	Empfohlene Verdünnungen: WB 1:1000-1:8000
Wirt: Kaninchen	Vollständiger Name: cyclin B1	IP 0.5-4.0 ug für IP und 1:1000-1:4000 für WB
Isotyp: IgG	Berechnete Masse: 48 kDa	IHC 1:200-1:800
Immunogen Katalognummer: AG29426	Beobachtete Masse: 55-60 kDa	IF 1:200-1:800

Anwendungen

Geprüfte Anwendungen: IF, IHC, IP, WB, ELISA	Positivkontrollen:
In Publikationen genannte Anwendungen: IF, IHC, WB	WB : HT-29-Zellen, C6-Zellen, HeLa-Zellen, K-562-Zellen
Getestete Reaktivität: Human	IP : HeLa-Zellen,
Zitierte Arten: Huhn, Human, Maus, Ratte, Rind	IHC : humanes Hautkrebsgewebe, humanes Tonsillitisgewebe
Hinweis-IHC: Antigendemaskierung mit TE-Puffer pH 9,0 empfohlen. (*) Wahlweise kann die Antigendemaskierung auch mit Citratpuffer pH 6,0 erfolgen.	IF : HeLa-Zellen, HT-29-Zellen

Hintergrundinformationen

Cyclin B1 is a regulatory protein involved in mitosis. The gene product complexes with p34(cdc2) to form the maturation-promoting factor (MPF). Two alternative transcripts have been found, a constitutively expressed transcript and a cell cycle-regulated transcript, that is expressed predominantly during G2/M phase of the cell cycle. The different transcripts result from the use of alternate transcription initiation sites. The antibody is specific to CCNB1. We got a 55-60 kDa band in western blotting maybe due to phosphorylation.

Bemerkenswerte Veröffentlichungen

Verfasser	Pubmed ID	Journal	Anwendung
Zilu Zhang	34570444	Cancer Biol Med	WB
Taiwei Wang	36169181	Oncol Rep	WB
Huan Ma	33573708	Oncol Res	WB

Lagerung

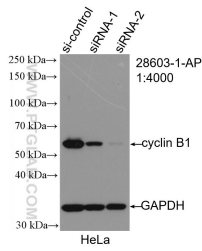
Lagerungsbedingungen:
Bei -20°C lagern. Nach dem Versand ein Jahr lang stabil
Lagerungspuffer:
PBS mit 0.02% Natriumazid und 50% Glycerin pH 7.3.
Aliquotieren ist nicht notwendig bei -20°C Lagerung

*** 20ul-Größen enthalten 0.1% BSA

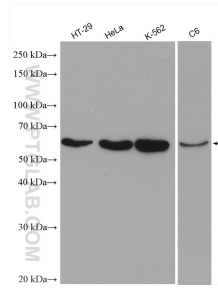
For technical support and original validation data for this product please contact:
T: 1 (888) 4PTGLAB (1-888-478-4522) (toll free in USA), or 1(312) 455-8498 (outside USA)
E: proteintech@ptglab.com
W: ptglab.com

This product is exclusively available under Proteintech Group brand and is not available to purchase from any other manufacturer.

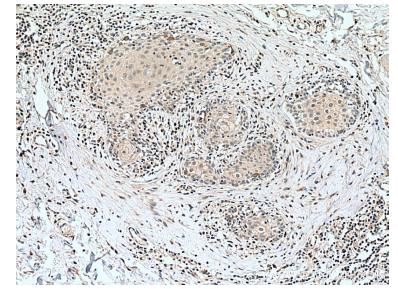
Ausgewählte Validierungsdaten



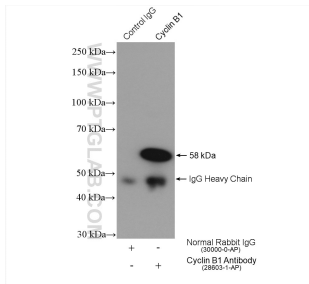
WB result of Cyclin B1 antibody (28603-1-AP; 1:4000; incubated at room temperature for 1.5 hours) with sh-Control and sh-Cyclin B1 transfected HeLa cells.



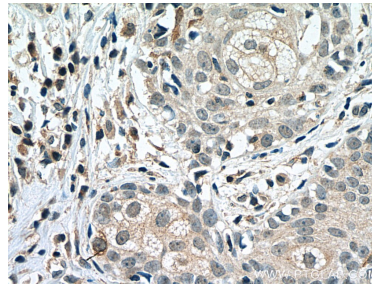
Various lysates were subjected to SDS PAGE followed by western blot with 28603-1-AP (Cyclin B1 antibody) at dilution of 1:4000 incubated at room temperature for 1.5 hours.



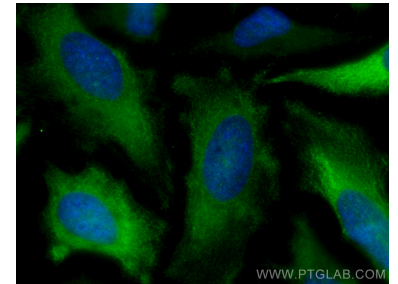
Immunohistochemical analysis of paraffin-embedded human skin cancer tissue slide using 28603-1-AP (Cyclin B1 antibody) at dilution of 1:400 (under 10x lens). Heat mediated antigen retrieval with Tris-EDTA buffer (pH 9.0).



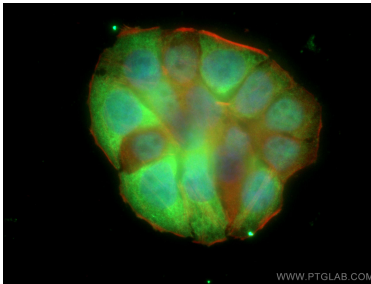
IP result of anti-Cyclin B1 (IP:28603-1-AP, 4ug; Detection:28603-1-AP 1:2000) with HeLa cells lysate 1800 ug.



Immunohistochemical analysis of paraffin-embedded human skin cancer tissue slide using 28603-1-AP (Cyclin B1 antibody) at dilution of 1:400 (under 40x lens). Heat mediated antigen retrieval with Tris-EDTA buffer (pH 9.0).



Immunofluorescent analysis of (-20°C Methanol) fixed HeLa cells using Cyclin B1 antibody (28603-1-AP) at dilution of 1:400 and CoraLite@488-Conjugated AffiniPure Goat Anti-Rabbit IgG(H+L).



Immunofluorescent analysis of (4% PFA) fixed HT-29 cells using Cyclin B1 antibody (28603-1-AP) at dilution of 1:400 and CoraLite@488-Conjugated AffiniPure Goat Anti-Rabbit IgG(H+L), CL594-Phalloidin (red).