

Nur für Forschungszwecke

CLEC12A Polyklonaler Antikörper

Katalog-Nr.:28627-1-AP



Allgemeine Informationen

Katalog-Nr.: 28627-1-AP	GenBank-Zugangsnummer: BC063424	Reinigungsmethode: Antigen-Affinitätsreinigung
Größe: 150ul , Konzentration: 550 µg/ml von Nanodrop;	GeneID (NCBI): 160364	Empfohlene Verdünnungen: WB 1:500-1:2000
Wirt: Kaninchen	Vollständiger Name: C-type lectin domain family 12, member A	
Isotyp: IgG	Berechnete Masse: 31 kDa	
Immunogen Katalognummer: AG27864	Beobachtete Masse: 55-75 kDa	

Anwendungen

Geprüfte Anwendungen: WB, ELISA	Positivkontrollen: WB : U-937-Zellen, human peripheral blood leukocyte
Getestete Reaktivität: Human	

Hintergrundinformationen

CLEC12A, also known as CD371, M1CL, DCAL-2 or CLL-1, is a type II transmembrane glycoprotein and a member of the C-type lectin superfamily (PMID: 30401586). This protein, which contains a single C-type lectin-like domain and a cytoplasmic immunoreceptor tyrosine-based inhibitory motif (ITIM), is related to LOX-1 and Dectin-1 and is variably spliced and highly N-glycosylated (PMID: 14739280). Its ITIM sequence recruits the tyrosine phosphatases SHP-1 and SHP-2 to negatively regulate Syk signaling. In humans, CLEC12A is mainly expressed on myeloid cells, being found on monocytes, granulocytes, macrophages and DC subsets, and at lower levels on CD4+ T cells (PMID: 32477350). The observed molecular weight of CLEC12A is between 40 and 75 kDa, which is much higher than the predicted molecular weight due to glycosylation (PMID: 14739280).

Lagerung

Lagerungsbedingungen:
Bei -20°C lagern. Nach dem Versand ein Jahr lang stabil
Lagerungspuffer:
PBS mit 0.02% Natriumazid und 50% Glycerin pH 7.3.
Aliquotieren ist nicht notwendig bei -20°C Lagerung

*** 20ul-Größen enthalten 0.1% BSA

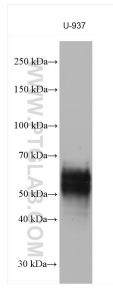
For technical support and original validation data for this product please contact:

T: 1 (888) 4PTGLAB (1-888-478-4522) (toll free
in USA), or 1(312) 455-8498 (outside USA)

E: proteintech@ptglab.com
W: ptglab.com

This product is exclusively available under Proteintech Group brand and is not available to purchase from any other manufacturer.

Ausgewählte Validierungsdaten



U-937 cells were subjected to SDS PAGE followed by western blot with 28627-1-AP (CLEC12A antibody) at dilution of 1:1000 incubated at room temperature for 1.5 hours.