

Nur für Forschungszwecke

ORAI1 Polyklonaler Antikörper

Katalog-Nr.:28637-1-AP



Allgemeine Informationen

Katalog-Nr.: 28637-1-AP	GenBank-Zugangsnummer: BC015369	Reinigungsmethode: Antigen-Affinitätsreinigung
Größe: 150ul , Konzentration: 500 µg/ml von Nanodrop;	GeneID (NCBI): 84876	Empfohlene Verdünnungen: WB 1:1000-1:4000
Wirt: Kaninchen	Vollständiger Name: ORAI calcium release-activated calcium modulator 1	
Isotyp: IgG	Berechnete Masse: 301 aa, 33 kDa	
Immunogen Katalognummer: AG29779	Beobachtete Masse: 32, 45-50 kDa	

Anwendungen

Geprüfte Anwendungen: WB,ELISA	Positivkontrollen: WB : PC-3-Zellen, A375-Zellen, A549-Zellen
Getestete Reaktivität: Human	

Hintergrundinformationen

Store-operated calcium channels (SOCs) play essential functions in various physiological processes. ORAI1 is a complex glycosylated protein, it exists in several molecular weight forms: a theoretical molecular weight of 32.7 kDa of the unmodified protein and two major glycosylated proteins of ~43 kDa and ~50 kDa (PMID: 22318387). Human patients with a severe combined immunodeficiency (SCID) syndrome possess point mutations in Orai1 gene.

Lagerung

Lagerungsbedingungen:
Bei -20°C lagern. Nach dem Versand ein Jahr lang stabil
Lagerungspuffer:
PBS mit 0.02% Natriumazid und 50% Glycerin pH 7.3.
Aliquotieren ist nicht notwendig bei -20°C Lagerung

*** 20ul-Größen enthalten 0.1% BSA

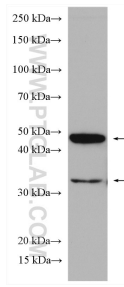
For technical support and original validation data for this product please contact:

T: 1 (888) 4PTGLAB (1-888-478-4522) (toll free
in USA), or 1(312) 455-8498 (outside USA)

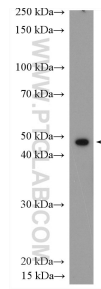
E: proteintech@ptglab.com
W: ptglab.com

This product is exclusively available under Proteintech Group brand and is not available to purchase from any other manufacturer.

Ausgewählte Validierungsdaten



PC-3 cells were subjected to SDS PAGE followed by western blot with 28637-1-AP (ORAI1 antibody) at dilution of 1:2000 incubated at room temperature for 1.5 hours.



A375 cells were subjected to SDS PAGE followed by western blot with 28637-1-AP (ORAI1 antibody) at dilution of 1:2000 incubated at room temperature for 1.5 hours.