

Nur für Forschungszwecke

RALYL Polyklonaler Antikörper

Katalog-Nr.: 28706-1-AP



Allgemeine Informationen

Katalog-Nr.: 28706-1-AP	GenBank-Zugangsnummer: BC031090	Reinigungsmethode: Antigen-Affinitätsreinigung
Größe: 150ul, Konzentration: 750 µg/ml von Nanodrop und 380 µg/ml durch die Bradford-Methode mit BSA als Standard;	GeneID (NCBI): 138046	Empfohlene Verdünnungen: WB 1:500-1:1000
Wirt: Kaninchen	Vollständiger Name: RALY RNA binding protein-like	
Isotyp: IgG	Berechnete Masse: 291 aa, 32 kDa	
Immunogen Katalognummer: AG30310	Beobachtete Masse: 33 kDa	

Anwendungen

Geprüfte Anwendungen: WB, ELISA	Positivkontrollen: WB: HEK-293T-Zellen, HeLa-Zellen
Getestete Reaktivität: Human	

Hintergrundinformationen

RALY RNA binding protein-like (RALYL) belongs to the RALY subfamily. RALYL locates in 8q21.2, the function of which is RNA-binding and nucleotide binding. The RALYL high expression in the normal adrenal, kidney and brain (Shyamsundar et al., 2005). Furthermore, RALYL expression down-regulated correlates with mental disorder (Lee et al., 2007), Parkinson's disease (Moran et al., 2006), brain cancer (Maris et al., 2008), adrenal cancer (Giordano et al., 2009) and kidney cancer (Higgins et al., 2003). The expression of RALYL was significantly low in Clear Cell Renal Cell Carcinoma and correlated with a poor prognosis in a large number of clinical samples. Our findings showed that RALYL may be a potential therapeutic target as well as a poor prognostic

Lagerung

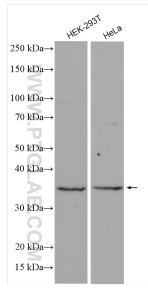
Lagerungsbedingungen:
Bei -20°C lagern. Nach dem Versand ein Jahr lang stabil
Lagerungspuffer:
PBS mit 0.02% Natriumazid und 50% Glycerin pH 7.3.
Aliquotieren ist nicht notwendig bei -20°C Lagerung

***** 20ul-Größen enthalten 0.1% BSA**

For technical support and original validation data for this product please contact:
T: 1 (888) 4PTGLAB (1-888-478-4522) (toll free in USA), or 1(312) 455-8498 (outside USA)
E: proteintech@ptglab.com
W: ptglab.com

This product is exclusively available under Proteintech Group brand and is not available to purchase from any other manufacturer.

Ausgewählte Validierungsdaten



Various lysates were subjected to SDS PAGE followed by western blot with 28706-1-AP (RALYL antibody) at dilution of 1:500 incubated at room temperature for 1.5 hours.