

Nur für Forschungszwecke

# KCC2/SLC12A5 Polyklonaler Antikörper

Katalog-Nr.: 28724-1-AP



## Allgemeine Informationen

<b>Katalog-Nr.:</b> 28724-1-AP	<b>GenBank-Zugangsnummer:</b> BC132670	<b>Reinigungsmethode:</b> Antigen-Affinitätsreinigung
<b>Größe:</b> 150ul, Konzentration: 600 µg/ml von Nanodrop;	<b>GeneID (NCBI):</b> 57468	<b>Empfohlene Verdünnungen:</b> WB 1:1000-1:6000 IHC 1:500-1:2000 IF 1:50-1:500
<b>Wirt:</b> Kaninchen	<b>Vollständiger Name:</b> solute carrier family 12 (potassium-chloride transporter), member 5	
<b>Isotyp:</b> IgG	<b>Beobachtete Masse:</b> 130-150 kDa	
<b>Immunogen Katalognummer:</b> AG30203		

## Anwendungen

### Geprüfte Anwendungen:

IF, IHC, WB, ELISA

### Getestete Reaktivität:

Human, Maus, Ratte

**Hinweis-IHC: Antigendemaskierung mit TE-Puffer pH 9,0 empfohlen. (\*) Wahlweise kann die Antigendemaskierung auch mit Citratpuffer pH 6,0 erfolgen.**

### Positivkontrollen:

WB: Maushirngewebe,

IHC: Rattenhirngewebe, Maushirngewebe

IF: Maus-Cerebellum-Gewebe,

## Hintergrundinformationen

KCC2, encoded by SLC12A5, is a neuron-specific K<sup>+</sup>-Cl<sup>-</sup> cotransporter that is essential for Cl<sup>-</sup> homeostasis and inhibitory synaptic transmission in brain. KCC2 is expressed at high levels in neurons throughout the nervous system. KCC2 deletion caused animal death. Alterations of KCC2 have been linked to neuropathic pain, temporal lobe epilepsy, and other diseases.

## Lagerung

### Lagerungsbedingungen:

Bei -20°C lagern. Nach dem Versand ein Jahr lang stabil

### Lagerungspuffer:

PBS mit 0.02% Natriumazid und 50% Glycerin pH 7.3.

Aliquotieren ist nicht notwendig bei -20°C Lagerung

\*\*\* 20ul-Größen enthalten 0.1% BSA

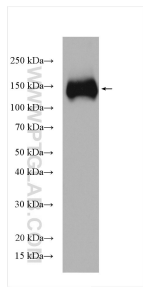
For technical support and original validation data for this product please contact:

T: 1 (888) 4PTGLAB (1-888-478-4522) (toll free in USA), or 1(312) 455-8498 (outside USA)

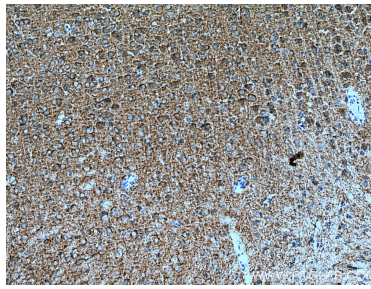
E: proteintech@ptglab.com  
W: ptglab.com

This product is exclusively available under Proteintech Group brand and is not available to purchase from any other manufacturer.

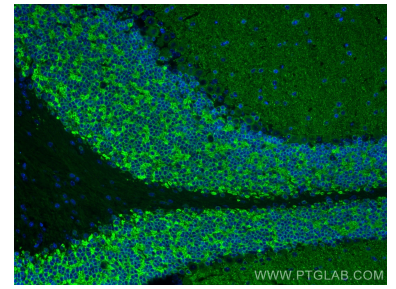
## Ausgewählte Validierungsdaten



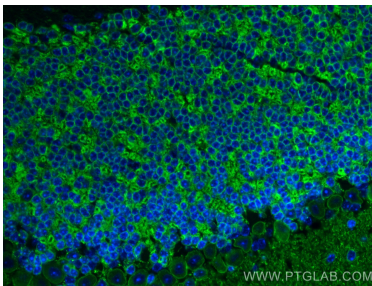
mouse brain tissue were subjected to SDS PAGE followed by western blot with 28724-1-AP (KCC2 antibody) at dilution of 1:3000 incubated at room temperature for 1.5 hours.



Immunohistochemical analysis of paraffin-embedded rat brain tissue slide using 28724-1-AP (KCC2 antibody) at dilution of 1:1000 (under 10x lens). Heat mediated antigen retrieval with Tris-EDTA buffer (pH 9.0).



Immunofluorescent analysis of (4% PFA) fixed mouse cerebellum tissue using KCC2/SLC12A5 antibody (28724-1-AP) at dilution of 1:200 and CoraLite®488-Conjugated AffiniPure Goat Anti-Rabbit IgG(H+L).



Immunofluorescent analysis of (4% PFA) fixed mouse cerebellum tissue using KCC2/SLC12A5 antibody (28724-1-AP) at dilution of 1:200 and CoraLite®488-Conjugated AffiniPure Goat Anti-Rabbit IgG(H+L).