

SLIT2 Polyklonaler Antikörper

Katalog-Nr.: 28730-1-AP

Allgemeine Informationen

Katalog-Nr.: 28730-1-AP	GenBank-Zugangsnummer: NM_004787	Reinigungsmethode: Antigen-Affinitätsreinigung
Größe: 150ul, Konzentration: 600 µg/ml von Nanodrop;	GeneID (NCBI): 9353	Empfohlene Verdünnungen: WB 1:500-1:1000
Wirt: Kaninchen	Vollständiger Name: slit homolog 2 (Drosophila)	
Isotyp: IgG	Berechnete Masse: 170 kDa	
Immunogen Katalognummer: AG30428	Beobachtete Masse: 100 kDa, 200 kDa	

Anwendungen

Geprüfte Anwendungen: WB, ELISA	Positivkontrollen: WB : HEK-293-Zellen, HeLa-Zellen
Getestete Reaktivität: Human	

Hintergrundinformationen

SLIT2, also named as SLIL3, is thought to act as a molecular guidance cue in cellular migration, and function appears to be mediated by interaction with roundabout homolog receptors. During neural development is involved in axonal navigation at the ventral midline of the neural tube and projection of axons to different regions. SLIT1 and SLIT2 seem to be essential for midline guidance in the forebrain by acting as repulsive signal preventing inappropriate midline crossing by axons projecting from the olfactory bulb. In spinal chord development, SLIT2 may play a role in guiding commissural axons once they reached the floor plate by modulating the response to netrin. SLIT2 may be implicated in spinal chord midline post-crossing axon repulsion. In vitro, only commissural axons that crossed the midline responded to SLIT2. In the developing visual system it appears to function as repellent for retinal ganglion axons by providing a repulsion that directs these axons along their appropriate paths prior to, and after passage through, the optic chiasm. In vitro, it collapses and repels retinal ganglion cell growth cones. SLIT2 seems to play a role in branching and arborization of CNS sensory axons, and in neuronal cell migration. It seems to be involved in regulating leukocyte migration. The antibody is specific to SLIT2. Slit2 is cleaved into 140 kDa N-terminal (Slit2-N) and 55-60 kDa C-terminal (Slit2-C) fragments, although the uncleaved/full-length form(200) can also be detected.

Lagerung

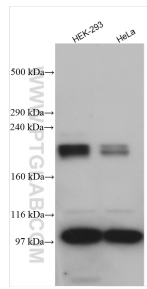
Lagerungsbedingungen:
Bei -20°C lagern. Nach dem Versand ein Jahr lang stabil
Lagerungspuffer:
PBS mit 0.02% Natriumazid und 50% Glycerin pH 7.3.
Aliquotieren ist nicht notwendig bei -20°C Lagerung

*** 20ul-Größen enthalten 0.1% BSA

For technical support and original validation data for this product please contact:
T: 1 (888) 4PTGLAB (1-888-478-4522) (toll free in USA), or 1(312) 455-8498 (outside USA)
E: proteintech@ptglab.com
W: ptglab.com

This product is exclusively available under Proteintech Group brand and is not available to purchase from any other manufacturer.

Ausgewählte Validierungsdaten



Various lysates were subjected to SDS PAGE followed by western blot with 28730-1-AP (SLIT2 antibody) at dilution of 1:800 incubated at room temperature for 1.5 hours.