

Nur für Forschungszwecke

Phospho-CREB1 (Ser133) Polyklonaler Antikörper



Katalog-Nr.: 28792-1-AP

5 Publikationen

Allgemeine Informationen

Katalog-Nr.: 28792-1-AP	GenBank-Zugangsnummer: BC010636	Reinigungsmethode: Antigen-Affinitätsreinigung
Größe: 100ul, Konzentration: 200 µg/ml von Nanodrop;	GeneID (NCBI): 1385	Empfohlene Verdünnungen: WB 1:1000-1:8000 IHC 1:50-1:500
Wirt: Kaninchen	Vollständiger Name: cAMP responsive element binding protein 1	
Isotyp: IgG	Berechnete Masse: 341 aa, 35 kDa	
	Beobachtete Masse: 35-46 kDa	

Anwendungen

Geprüfte Anwendungen: IHC, WB, ELISA	Positivkontrollen: WB : mit Forskolin behandelte HSC-T6-Zellen, IHC : humanes Lebergewebe,
In Publikationen genannte Anwendungen: WB	
Getestete Reaktivität: Human, Ratte	
Zitierte Arten: Human, Maus	
Hinweis-IHC: Antigendemaskierung mit TE-Puffer pH 9,0 empfohlen. (*) Wahlweise kann die Antigendemaskierung auch mit Citratpuffer pH 6,0 erfolgen.	

Hintergrundinformationen

The cAMP-response element binding protein (CREB) is localized in the nucleus and acts as a transcription factor, which binds to the cAMP response element (CRE) of the promoters of its target genes, upon phosphorylation at Ser133 by different receptor-activated protein kinases, such as protein kinase A (PKA), calmodulin-dependent protein kinase (CaMK), mitogen-activated protein kinases (MAPK), and other kinases. The activity of CREB1 in neurons has been correlated with various intracellular processes, including proliferation, differentiation, survival, long-term synaptic potentiation, neurogenesis, and neuronal plasticity. CREB1 belongs to the CREB/activating transcription factor (ATF) family of transcription factors. The antibody also detects the phosphorylated form of the CREB-related protein ATF1. (PMID: 30214393, PMID: 33917483, PMID: 32605164)

Bemerkenswerte Veröffentlichungen

Verfasser	Pubmed ID	Journal	Anwendung
Jia Liu	35605921	J Ethnopharmacol	WB
Peng Xu	35278661	Brain Res Bull	WB
Xiaoye Fan	36608590	Redox Biol	WB

Lagerung

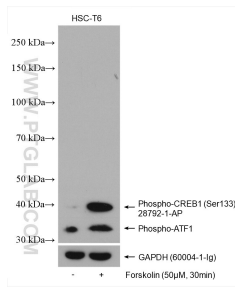
Lagerungsbedingungen:
Bei -20°C lagern. Nach dem Versand ein Jahr lang stabil
Lagerungspuffer:
PBS mit 0.02% Natriumazid und 50% Glycerin pH 7.3.
Aliquotieren ist nicht notwendig bei -20°C Lagerung

*** 20ul-Größen enthalten 0.1% BSA

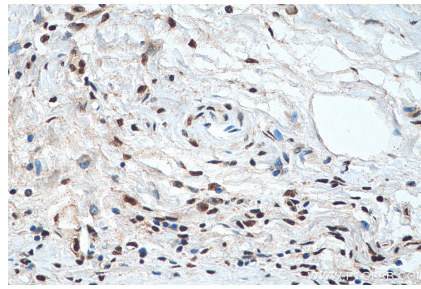
For technical support and original validation data for this product please contact:
T: 1 (888) 4PTGLAB (1-888-478-4522) (toll free in USA), or 1(312) 455-8498 (outside USA)
E: proteintech@ptglab.com
W: ptglab.com

This product is exclusively available under Proteintech Group brand and is not available to purchase from any other manufacturer.

Ausgewählte Validierungsdaten



Non-treated and Forskolin treated HSC-T6 cells were subjected to SDS PAGE followed by western blot with 28792-1-AP (Phospho-CREB1 (Ser133) antibody) at dilution of 1:4000 incubated at room temperature for 1 hours. The membrane was stripped and re-blotted with GAPDH antibody as loading control.



Immunohistochemical analysis of paraffin-embedded human liver tissue slide using 28792-1-AP (Phospho-CREB1 (Ser133) antibody) at dilution of 1:200 (under 40x lens). Heat mediated antigen retrieval with Tris-EDTA buffer (pH 9.0).