

Nur für Forschungszwecke

Phospho-Chk1 (Ser345) Polyklonaler Antikörper



Katalog-Nr.:28803-1-AP

Allgemeine Informationen

Katalog-Nr.: 28803-1-AP	GenBank-Zugangsnummer: BC004202	Reinigungsmethode: Antigen-Affinitätsreinigung
Größe: 100ul , Konzentration: 330 µg/ml von Nanodrop;	GeneID (NCBI): 1111	Empfohlene Verdünnungen: WB 1:500-1:2000
Wirt: Kaninchen	Vollständiger Name: CHK1 checkpoint homolog (S. pombe)	
Isotyp: IgG	Berechnete Masse: 54 kDa	
	Beobachtete Masse: 50 kDa	

Anwendungen

Geprüfte Anwendungen: WB, ELISA	Positivkontrollen: WB : mit Calyculin A behandelte NIH/3T3-Zellen, Mit Calyculin A behandelte HeLa-Zellen
Getestete Reaktivität: Human, Maus	

Hintergrundinformationen

The checkpoint kinase 1 (Chk1) is a conserved kinase that imposes cell cycle delays in response to impediments to DNA replication. Chk1 kinase is downstream of the ATR kinase. ATR phosphorylates Chk1 kinase and other proteins to ensure replication is being blocked as to avoid replication fork collapse and DNA damage. Activation of Chk1 involves phosphorylation at Ser317 and Ser345 by ATM/ATR, followed by autophosphorylation of Ser296. In vitro Chk1 binds to and phosphorylate the dual-specificity protein phosphatases Cdc25A, Cdc25B, and Cdc25C, which control cell cycle transitions by dephosphorylating cyclin-dependent kinases. (PMID:22941630, PMID: 32571801, PMID:19276361)

Lagerung

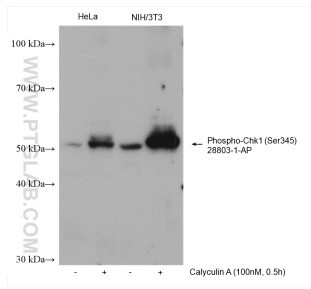
Lagerungsbedingungen:
Bei -20°C lagern. Nach dem Versand ein Jahr lang stabil
Lagerungspuffer:
PBS mit 0.02% Natriumazid und 50% Glycerin pH 7.3.
Aliquotieren ist nicht notwendig bei -20°C Lagerung

***** 20ul-Größen enthalten 0.1% BSA**

For technical support and original validation data for this product please contact:
T: 1 (888) 4PTGLAB (1-888-478-4522) (toll free in USA), or 1(312) 455-8498 (outside USA)
E: proteintech@ptglab.com
W: ptglab.com

This product is exclusively available under Proteintech Group brand and is not available to purchase from any other manufacturer.

Ausgewählte Validierungsdaten



Non-treated and Calyculin A treated cells were subjected to SDS PAGE followed by western blot with 28803-1-AP (Phospho-Chk1 (Ser345) antibody) at dilution of 1:1000 incubated at room temperature for 1 hours.