

## Allgemeine Informationen

<b>Katalog-Nr.:</b> 28819-1-AP	<b>GenBank-Zugangsnummer:</b> BC013437	<b>Reinigungsmethode:</b> Antigen-Affinitätsreinigung
<b>Größe:</b> 150ul , Konzentration: 350 µg/ml von Nanodrop;	<b>GeneID (NCBI):</b> 4205	<b>Empfohlene Verdünnungen:</b> WB 1:500-1:2000 IHC 1:50-1:500
<b>Wirt:</b> Kaninchen	<b>Vollständiger Name:</b> myocyte enhancer factor 2A	
<b>Isotyp:</b> IgG	<b>Berechnete Masse:</b> 499 aa, 54 kDa	
<b>Immunogen Katalognummer:</b> AG30349	<b>Beobachtete Masse:</b> 50-70kDa	

## Anwendungen

### Geprüfte Anwendungen:

IHC, WB, ELISA

### Getestete Reaktivität:

Human, Maus, Ratte

### Positivkontrollen:

WB : HUVEC-Zellen, SH-SY5Y-Zellen, THP-1-Zellen

IHC : Rattenhirngewebe,

**Hinweis-IHC: Antigendemaskierung mit TE-Puffer pH 9,0 empfohlen. (\*) Wahlweise kann die Antigendemaskierung auch mit Citratpuffer pH 6,0 erfolgen.**

## Hintergrundinformationen

MEF2A belongs to a family of DNA binding regulatory proteins. Each of these proteins which belong to the myocyte-specific enhancer factor-2 (MEF2) family binds to the MEF2 target DNA sequence present in the regulatory regions of many, if not all, muscle-specific genes. MEF2A plays diverse roles in the control of cell growth, survival and apoptosis via p38 MAPK signaling in muscle-specific and/or growth factor-related transcription. MEF2A also has key roles in cardiac and skeletal muscle development. MEF2A is especially abundant in granule neurons of the cerebellar cortex throughout the period of synaptogenesis. This antibody can detect two bands around 60 kDa to 70 kDa, the larger band may correspond to its post-translational modifications.(PMID: 15483225,16484498, 23486945 )

## Lagerung

### Lagerungsbedingungen:

Bei -20°C lagern. Nach dem Versand ein Jahr lang stabil

### Lagerungspuffer:

PBS mit 0.02% Natriumazid und 50% Glycerin pH 7.3.

Aliquotieren ist nicht notwendig bei -20°C Lagerung

\*\*\* 20ul-Größen enthalten 0.1% BSA

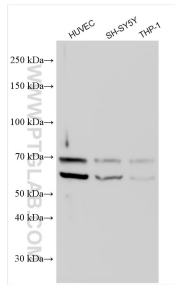
For technical support and original validation data for this product please contact:

T: 1 (888) 4PTGLAB (1-888-478-4522) (toll free  
in USA), or 1(312) 455-8498 (outside USA)

E: proteintech@ptglab.com  
W: ptglab.com

This product is exclusively available under Proteintech Group brand and is not available to purchase from any other manufacturer.

## Ausgewählte Validierungsdaten



Various lysates were subjected to SDS PAGE followed by western blot with 28819-1-AP (MEF2A antibody) at dilution of 1:1000 incubated at room temperature for 1.5 hours.



Immunohistochemical analysis of paraffin-embedded rat brain tissue slide using 28819-1-AP (MEF2A antibody) at dilution of 1:200 (under 10x lens). Heat mediated antigen retrieval with Tris-EDTA buffer (pH 9.0).