

Nur für Forschungszwecke

Phospho-MEK6 (Ser207) Polyklonaler Antikörper



Katalog-Nr.: 28903-1-AP

Allgemeine Informationen

Katalog-Nr.: 28903-1-AP	GenBank-Zugangsnummer: BC012009	Reinigungsmethode: Antigen-Affinitätsreinigung
Größe: 100ul , Konzentration: 600 µg/ml von Nanodrop;	GeneID (NCBI): 5608	Empfohlene Verdünnungen: WB 1:1000-1:6000
Wirt: Kaninchen	Vollständiger Name: mitogen-activated protein kinase kinase 6	
Isotyp: IgG	Berechnete Masse: 334 aa, 37 kDa	
	Beobachtete Masse: 35-37 kDa	

Anwendungen

Geprüfte Anwendungen: WB, ELISA	Positivkontrollen: WB : UV treated HEK-293 cells, HEK-293-Zellen, HeLa-Zellen
Getestete Reaktivität: Human	

Hintergrundinformationen

MAPKK6 (Dual specificity mitogen activated protein kinase kinase 6), also known as MAP2K6 / MEK6 / MKK6, is a member of MAPKK protein kinase family. MKK6 plays an important role in intracellular signaling pathways leading toward activation of the p38 MAP kinase. MEK6 phosphorylates and activates p38 MAP kinase in response to inflammatory cytokines or environmental stress. Phosphorylation of Ser207 and Thr211 by MAP3Ks is critical for MEK6 activation, and acetylation of these residues by VopA blocks MEK6 activity (PMID: 26648936). The antibody also recognizes the ser218 phosphorylation site of MEK3.

Lagerung

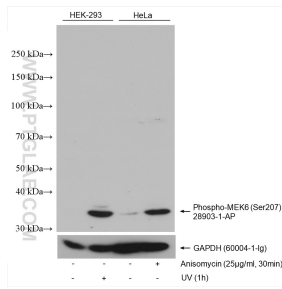
Lagerungsbedingungen:
Bei -20°C lagern. Nach dem Versand ein Jahr lang stabil
Lagerungspuffer:
PBS mit 0.02% Natriumazid und 50% Glycerin pH 7.3.
Aliquotieren ist nicht notwendig bei -20°C Lagerung

***** 20ul-Größen enthalten 0.1% BSA**

For technical support and original validation data for this product please contact:
T: 1 (888) 4PTGLAB (1-888-478-4522) (toll free in USA), or 1(312) 455-8498 (outside USA)
E: proteintech@ptglab.com
W: ptglab.com

This product is exclusively available under Proteintech Group brand and is not available to purchase from any other manufacturer.

Ausgewählte Validierungsdaten



Non-treated HEK-293 cells, UV treated HEK-293 cells, non-treated HeLa cells and Anisomycin treated HeLa cells were subjected to SDS PAGE followed by western blot with 28903-1-AP (Phospho-MEK6 (Ser207) antibody) at dilution of 1:3000 incubated at room temperature for 1.5 hours. The membrane was stripped and re-blotted with GAPDH antibody as loading control.