

Nur für Forschungszwecke

# Phospho-PLA2G4A (Ser505) Polyklonaler Antikörper



Katalog-Nr.: 28925-1-AP

## Allgemeine Informationen

<b>Katalog-Nr.:</b> 28925-1-AP	<b>GenBank-Zugangsnummer:</b> BC114340	<b>Reinigungsmethode:</b> Antigen-Affinitätsreinigung
<b>Größe:</b> 100ul, Konzentration: 200 µg/ml von Nanodrop;	<b>GeneID (NCBI):</b> 5321	<b>Empfohlene Verdünnungen:</b> WB 1:1000-1:6000
<b>Wirt:</b> Kaninchen	<b>Vollständiger Name:</b> phospholipase A2, group IVA (cytosolic, calcium-dependent)	
<b>Isotyp:</b> IgG	<b>Berechnete Masse:</b> 749 aa, 85 kDa	
	<b>Beobachtete Masse:</b> 100-110 kDa	

## Anwendungen

<b>Geprüfte Anwendungen:</b> WB, ELISA	<b>Positivkontrollen:</b> WB : Mit λ-Phosphatase behandelte HeLa-Zellen,
<b>Getestete Reaktivität:</b> Human	

## Hintergrundinformationen

PLA2G4A, also named as cPLA2 (cytosolic phospholipase A2), is a highly conserved and widely expressed enzyme which can promote lipid mediator production. PLA2G4A plays a major role in membrane lipid remodeling and biosynthesis of lipid mediators of the inflammatory response. It has been reported that the activity and expression levels of PLA2G4A are upregulated in several neurodegenerative diseases. PLA2G4A can be activated at the phosphorylation site of ser505 by MAP kinase. (PMID: 25838312, 8381049, 31238788)

## Lagerung

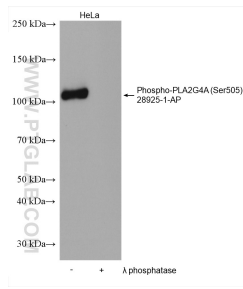
**Lagerungsbedingungen:**  
Bei -20°C lagern. Nach dem Versand ein Jahr lang stabil  
**Lagerungspuffer:**  
PBS with 0.02% sodium azide, 50% glycerol pH 7.3 and 0.05% BSA.  
Aliquotieren ist nicht notwendig bei -20°C Lagerung

\*\*\* 20ul-Größen enthalten 0.1% BSA

For technical support and original validation data for this product please contact:  
T: 1 (888) 4PTGLAB (1-888-478-4522) (toll free in USA), or 1(312) 455-8498 (outside USA)  
E: proteintech@ptglab.com  
W: ptglab.com

This product is exclusively available under Proteintech Group brand and is not available to purchase from any other manufacturer.

## Ausgewählte Validierungsdaten



Non-treated HeLa and  $\lambda$  phosphatase treated HeLa cells were subjected to SDS PAGE followed by western blot with 28925-1-AP (Phospho-PLA2G4A (Ser505) antibody) at dilution of 1:3000 incubated at 4°C overnight.