

Nur für Forschungszwecke

Phospho-PKC Alpha (Ser657) Polyklonaler Antikörper



Katalog-Nr.: 28926-1-AP

Allgemeine Informationen

Katalog-Nr.: 28926-1-AP	GenBank-Zugangsnummer: AK055431	Reinigungsmethode: Antigen-Affinitätsreinigung
Größe: 100ul, Konzentration: 260 µg/ml von Nanodrop;	GeneID (NCBI): 5578	Empfohlene Verdünnungen: WB 1:500-1:3000
Wirt: Kaninchen	Vollständiger Name: protein kinase C, alpha	
Isotyp: IgG	Berechnete Masse: 77 kDa	
	Beobachtete Masse: 77 kDa	

Anwendungen

Geprüfte Anwendungen: WB, ELISA	Positivkontrollen: WB: Mit Calyculin A behandelte PC-3-Zellen,
Getestete Reaktivität: Human	

Hintergrundinformationen

PKCs are a family of serine/threonine kinases involved in various processes in cells including proliferation, differentiation, cell survival, and apoptosis. PKC family is composed of three different subgroups: conventional (cPKC), the novel (nPKC) and atypical (aPKC). PKC α , β 1, β 2, and γ belong to cPKC, PKC δ , ϵ , η and θ are nPKC, whereas aPKC comprises of PKC ζ and λ /1. All PKCs consist of the N-terminal regulatory region and C-terminal catalytic region (kinase domain). PKCs are physiologically activated by various extracellular signals transduced by hormones, growth factors, cytokines or antigens. The presence of activated PKCs on internal membranes leads to the phosphorylation of various interacting proteins. (PMID: 32466765, PMID: 12417016)

Lagerung

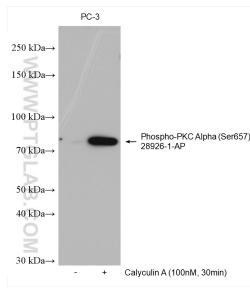
Lagerungsbedingungen:
Bei -20°C lagern. Nach dem Versand ein Jahr lang stabil
Lagerungspuffer:
PBS mit 0.02% Natriumazid und 50% Glycerin pH 7.3.
Aliquotieren ist nicht notwendig bei -20°C Lagerung

***** 20ul-Größen enthalten 0.1% BSA**

For technical support and original validation data for this product please contact:
T: 1 (888) 4PTGLAB (1-888-478-4522) (toll free in USA), or 1(312) 455-8498 (outside USA)
E: proteintech@ptglab.com
W: ptglab.com

This product is exclusively available under Proteintech Group brand and is not available to purchase from any other manufacturer.

Ausgewählte Validierungsdaten



Non-treated and Calyculin A treated PC-3 cells were subjected to SDS PAGE followed by western blot with 28926-1-AP (Phospho-PKC Alpha (Ser657) antibody) at dilution of 1:1500 incubated at room temperature for 1 hours.