

Nur für Forschungszwecke

Phospho-PRKD1 (Ser916) Polyklonaler Antikörper



Katalog-Nr.: 28928-1-AP

2 Publikationen

Allgemeine Informationen

Katalog-Nr.: 28928-1-AP	GenBank-Zugangsnummer: NM_001330069	Reinigungsmethode: Antigen-Affinitätsreinigung
Größe: 100ul, Konzentration: 110 µg/ml von Nanodrop;	GeneID (NCBI): 5587	Empfohlene Verdünnungen: WB 1:500-1:2000
Wirt: Kaninchen	Vollständiger Name: protein kinase D1	
Isotyp: IgG	Berechnete Masse: 102 kDa	
	Beobachtete Masse: 110 kDa	

Anwendungen

Geprüfte Anwendungen: WB, ELISA	Positivkontrollen: WB: mit Insulin behandelte NIH/3T3-Zellen,
In Publikationen genannte Anwendungen: WB	
Getestete Reaktivität: Human, Maus	
Zitierte Arten: Ratte	

Hintergrundinformationen

Protein kinase D1 (PRKD1), also named as PKD1 and PKC μ , is comprised of two cysteine-rich domains and a pleckstrin homology (PH) domain. PKD1 is involved in cellular processes including protein secretion, proliferation, cytoskeletal reorganization, Golgi function, immune function and apoptosis. It is widely expressed in thyroid, brain, heart, lung and other tissues. PKCs have been shown to regulate PKD1 activation. It has been reported that ser 916 is a PKD1 autophosphorylation site. PKD1 can be activated by growth factors, oxidative stress, thrombin, bioactive lipids, cross-linking of B- and T-cell receptors and some G-protein coupled receptors (GPCR). PKD1 is located mainly in the cytoplasm in unstimulated cells, while PKD1 migrates to the membrane in activated cells. (PMID: 17306383, 24806360, 30101477, 21696630)

Bemerkenswerte Veröffentlichungen

Verfasser	Pubmed ID	Journal	Anwendung
Yao Liu	33359794	Food Chem Toxicol	WB
Jianpeng Chen	36525926	Biochem Biophys Res Commun	WB

Lagerung

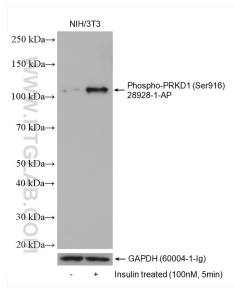
Lagerungsbedingungen:
Bei -20°C lagern. Nach dem Versand ein Jahr lang stabil
Lagerungspuffer:
PBS mit 0,1% Natriumazid und 50% Glycerin, pH 7,3 und 0,05% BSA.
Aliquotieren ist nicht notwendig bei -20°C Lagerung

*** 20ul-Größen enthalten 0.1% BSA

For technical support and original validation data for this product please contact:
T: 1 (888) 4PTGLAB (1-888-478-4522) (toll free in USA), or 1(312) 455-8498 (outside USA)
E: proteintech@ptglab.com
W: ptglab.com

This product is exclusively available under Proteintech Group brand and is not available to purchase from any other manufacturer.

Ausgewählte Validierungsdaten



Non-treated NIH/3T3 and Insulin treated NIH/3T3 cells were subjected to SDS PAGE followed by western blot with 28928-1-AP (Phospho-PRKD1 (Ser916) antibody) at dilution of 1:1000 incubated at 4°C overnight. The membrane was stripped and re-blotted with GAPDH antibody as loading control.