

Nur für Forschungszwecke

Phospho-MEK1 (Thr386) Polyklonaler Antikörper



Katalog-Nr.: 28935-1-AP

Allgemeine Informationen

Katalog-Nr.: 28935-1-AP	GenBank-Zugangsnummer: BC139729	Reinigungsmethode: Antigen-Affinitätsreinigung
Größe: 100ul, Konzentration: 200 µg/ml von Nanodrop;	GeneID (NCBI): 5604	Empfohlene Verdünnungen: WB 1:1000-1:4000
Wirt: Kaninchen	Vollständiger Name: mitogen-activated protein kinase kinase 1	
Isotyp: IgG	Berechnete Masse: 43 kDa	
	Beobachtete Masse: 40-45 kDa	

Anwendungen

Geprüfte Anwendungen: WB, ELISA	Positivkontrollen: WB : Mit λ-Phosphatase behandelte HeLa-Zellen,
Getestete Reaktivität: Human	

Hintergrundinformationen

MEK1 is also named as MAP2K1 (mitogen-activated protein kinase kinase 1), MAPKK1, PRKMK1, MKK1 and belongs to the MAP kinase kinase subfamily. It is a dual-specificity kinase that mediate ERK1 and ERK2 activation during adhesion and growth factor signaling(PMID:19219045). It also plays an essential role in extra-embryonic ectoderm during placentogenesis. MEK1 has 2 isoforms produced by alternative splicing with the molecular weight of 43 kDa and 41 kDa. MEK1 may form a heterodimer with MEK2.(PMID:21144847,19219045).

Lagerung

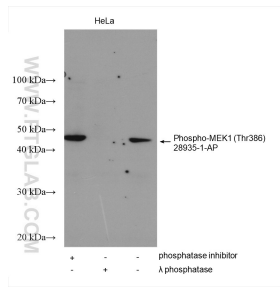
Lagerungsbedingungen:
Bei -20°C lagern. Nach dem Versand ein Jahr lang stabil
Lagerungspuffer:
PBS mit 0,02% Natriumazid, 50% Glycerin, pH 7,3 und 0,05% BSA.
Aliquotieren ist nicht notwendig bei -20°C Lagerung

*** 20ul-Größen enthalten 0.1% BSA

For technical support and original validation data for this product please contact:
T: 1 (888) 4PTGLAB (1-888-478-4522) (toll free in USA), or 1(312) 455-8498 (outside USA)
E: proteintech@ptglab.com
W: ptglab.com

This product is exclusively available under Proteintech Group brand and is not available to purchase from any other manufacturer.

Ausgewählte Validierungsdaten



Non-treated HeLa cells, phosphatase inhibitor treated and λ phosphatase treated HeLa cells were subjected to SDS PAGE followed by western blot with 28935-1-AP (Phospho-MEK1 (Thr386) antibody) at dilution of 1:2000 incubated at room temperature for 1.5 hours.