

Nur für Forschungszwecke

Phospho-STAT1 (Ser727) Polyklonaler Antikörper



Katalog-Nr.:28977-1-AP

Allgemeine Informationen

Katalog-Nr.:
28977-1-AP

Größe:
100ul , Konzentration: 350 µg/ml von
Nanodrop;

Wirt:
Kaninchen

Isotyp:
IgG

GenBank-Zugangsnummer:
BC002704

GeneID (NCBI):
6772

Vollständiger Name:
signal transducer and activator of
transcription 1, 91kDa

Berechnete Masse:
83 kDa

Beobachtete Masse:
84 kDa

Reinigungsmethode:

Antigen-Affinitätsreinigung

Empfohlene Verdünnungen:
WB 1:500-1:2000

Anwendungen

Geprüfte Anwendungen:

WB, ELISA

Getestete Reaktivität:

Human

Positivkontrollen:

WB : mit IFN-gamma behandelte HeLa-Zellen,

Hintergrundinformationen

STAT1 (signal transducers and activators of transcription 1) is a member of the STAT protein family. STAT family members are phosphorylated by the receptor associated kinases, and then form homo- or heterodimers that translocate to the cell nucleus where they act as transcription activators. STAT1 activating phosphorylation at Ser727 is p38-dependant during lipotoxic stress. MLK3 activation triggers a MAPK signaling cascade resulting in STAT1 Ser727 phosphorylation. The phosphorylation of STAT1 Ser727 increases its nuclear localization, and transcriptional activity. (PMID: 28262979).

Lagerung

Lagerungsbedingungen:

Bei -20°C lagern. Nach dem Versand ein Jahr lang stabil

Lagerungspuffer:

PBS mit 0.02% Natriumazid und 50% Glycerin pH 7.3.

Aliquotieren ist nicht notwendig bei -20°C Lagerung

*** 20ul-Größen enthalten 0.1% BSA

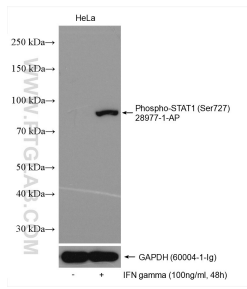
For technical support and original validation data for this product please contact:

T: 1 (888) 4PTGLAB (1-888-478-4522) (toll free
in USA), or 1(312) 455-8498 (outside USA)

E: proteintech@ptglab.com
W: ptglab.com

This product is exclusively available under Proteintech Group brand and is not available to purchase from any other manufacturer.

Ausgewählte Validierungsdaten



Non-treated HeLa cells and IFN gamma treated HeLa cells were subjected to SDS PAGE followed by western blot with 28977-1-AP (Phospho-STAT1 (Ser727) antibody) at dilution of 1:1000 incubated at room temperature for 1.5 hours. The membrane was stripped and re-blotted with GAPDH antibody as loading control.