

Nur für Forschungszwecke

Phospho-TBC1D1 (Ser660) Polyklonaler Antikörper



Katalog-Nr.: 29034-1-AP

Allgemeine Informationen

Katalog-Nr.: 29034-1-AP	GenBank-Zugangsnummer: BC050321	Reinigungsmethode: Antigen-Affinitätsreinigung
Größe: 100ul, Konzentration: 300 µg/ml von Nanodrop;	GeneID (NCBI): 23216	Empfohlene Verdünnungen: WB 1:5000-1:50000
Wirt: Kaninchen	Vollständiger Name: TBC1 (tre-2/USP6, BUB2, cdc16) domain family, member 1	
Isotyp: IgG	Berechnete Masse: 133 kDa	
	Beobachtete Masse: 160 kDa	

Anwendungen

Geprüfte Anwendungen: WB, ELISA	Positivkontrollen: WB: Mit Calyculin A behandelte HeLa-Zellen,
Getestete Reaktivität: Human	

Hintergrundinformationen

TBC1D1 belong to the family of RabGAPs and its physiological roles in glucose homeostasis and its implication in human diseases have already been characterized in skeletal muscle and adipocytes in a large number of independent studies. TBC1D1 including twophospho-tyrosine-binding (PTB) domains, a calmodulin-binding domain(CBD) and the functional GAP domain responsible for catalyzing GTP hydrolysis. TBC1D1 is phosphorylated by AMPK at Ser660 and Thr237, and by AKT at Thr596. The RabGAPs TBC1D1 is important regulators of glucose homeostasis inskeletal muscle and adipose tissue. (PMID: 31627187, PMID: 18477703)

Lagerung

Lagerungsbedingungen:
Bei -20°C lagern.
Lagerungspuffer:
PBS mit 0,02% Natriumazid und 50% Glycerin, pH 7,3 und 0,05% BSA
Aliquotieren ist nicht notwendig bei -20°C Lagerung

*** 20ul-Größen enthalten 0.1% BSA

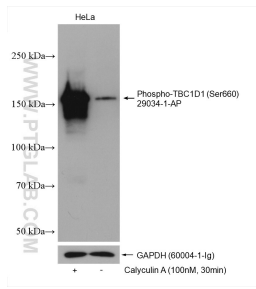
For technical support and original validation data for this product please contact:

T: 1 (888) 4PTGLAB (1-888-478-4522) (toll free
in USA), or 1(312) 455-8498 (outside USA)

E: proteintech@ptglab.com
W: ptglab.com

This product is exclusively available under Proteintech Group brand and is not available to purchase from any other manufacturer.

Ausgewählte Validierungsdaten



Non-treated HeLa and Calyculin A treated HeLa cells were subjected to SDS PAGE followed by western blot with 29034-1-AP (Phospho-TBC1D1 (Ser660) antibody) at dilution of 1:10000 incubated at room temperature for 1 hours.