

Nur für Forschungszwecke

Phospho-PKC Alpha (Thr638) Polyklonaler Antikörper



Katalog-Nr.: 29123-1-AP

2 Publikationen

Allgemeine Informationen

Katalog-Nr.:

29123-1-AP

Größe:

100ul, Konzentration: 240 µg/ml von
Nanodrop;

Wirt:

Kaninchen

Isotyp:

IgG

GenBank-Zugangsnummer:

AK055431

GeneID (NCBI):

5578

Vollständiger Name:

protein kinase C, alpha

Berechnete Masse:

77 kDa

Beobachtete Masse:

77 kDa

Reinigungsmethode:

Antigen-Affinitätsreinigung

Empfohlene Verdünnungen:

WB 1:2000-1:10000

Anwendungen

Geprüfte Anwendungen:

WB, ELISA

In Publikationen genannte Anwendungen:

WB

Getestete Reaktivität:

Human, Maus

Zitierte Arten:

Human

Positivkontrollen:

WB: Mit λ-Phosphatase behandelte NIH/3T3-Zellen,
PMA treated HL-60 cells

Hintergrundinformationen

PKCs are a family of serine/threonine kinases involved in various processes in cells including proliferation, differentiation, cell survival, and apoptosis. PKC family is composed of three different subgroups: conventional (cPKC), the novel (nPKC) and atypical (aPKC). PKCα, β1, β2, and γ belong to cPKC, PKCδ, ε, η and θ are nPKC, whereas aPKC comprises of PKCζ and λ/ι. All PKCs consist of the N-terminal regulatory region and C-terminal catalytic region (kinase domain). PKCs are physiologically activated by various extracellular signals transduced by hormones, growth factors, cytokines or antigens. The presence of activated PKCs on internal membranes leads to the phosphorylation of various interacting proteins. (PMID: 32466765, PMID: 12417016)

Bemerkenswerte Veröffentlichungen

Verfasser	Pubmed ID	Journal	Anwendung
Jing Ren	36999945	Cancer Med	WB
Qiong Wang	36925031	Chem Biol Interact	WB

Lagerung

Lagerungsbedingungen:

Bei -20°C lagern. Nach dem Versand ein Jahr lang stabil

Lagerungspuffer:

PBS mit 0.02% Natriumazid und 50% Glycerin pH 7.3.

Aliquotieren ist nicht notwendig bei -20°C Lagerung

*** 20ul-Größen enthalten 0.1% BSA

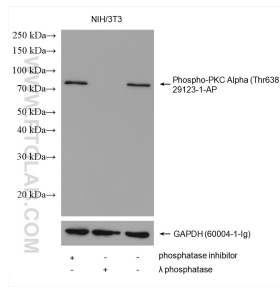
For technical support and original validation data for this product please contact:

T: 1 (888) 4PTGLAB (1-888-478-4522) (toll free
in USA), or 1(312) 455-8498 (outside USA)

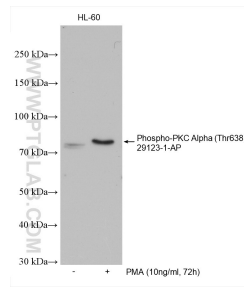
E: proteintech@ptglab.com
W: ptglab.com

This product is exclusively available under Proteintech Group brand and is not available to purchase from any other manufacturer.

Ausgewählte Validierungsdaten



Non-treated NIH/3T3, phosphatase inhibitor treated and λ phosphatase treated NIH/3T3 cells were subjected to SDS PAGE followed by western blot with 29123-1-AP (Phospho-PKC Alpha (Thr638) antibody) at dilution of 1:5000 incubated at room temperature for 1 hours. The membrane was stripped and re-blotted with GAPDH antibody as loading control.



Non-treated and PMA treated HL-60 cells were subjected to SDS PAGE followed by western blot with 29123-1-AP (Phospho-PKC Alpha (Thr638) antibody) at dilution of 1:5000 incubated at room temperature for 1.5 hours.