

Nur für Forschungszwecke

Phospho-S6 Ribosomal protein (Ser240/244) Polyklonaler Antikörper



Katalog-Nr.: 29220-1-AP

Allgemeine Informationen

Katalog-Nr.: 29220-1-AP	GenBank-Zugangsnummer: NM_001010	Reinigungsmethode: Antigen-Affinitätsreinigung
Größe: 100ul, Konzentration: 800 µg/ml von Nanodrop;	GeneID (NCBI): 6194	Empfohlene Verdünnungen: WB 1:1000-1:6000
Wirt: Kaninchen	Vollständiger Name: ribosomal protein S6	
Isotyp: IgG	Beobachtete Masse: 32 kDa	

Anwendungen

Geprüfte Anwendungen: WB, ELISA	Positivkontrollen: WB : mit 10%igem fetalen Rinderserum behandelte NIH/3T3-Zellen,
Getestete Reaktivität: Human, Maus	

Hintergrundinformationen

Ribosomal protein S6 (RPS6), also named as Phosphoprotein NP33, may play an important role in controlling cell growth and proliferation through the selective translation of particular classes of mRNA. Ribosomal protein S6 is the major substrate of protein kinases in eukaryote ribosomes. The phosphorylation is stimulated by growth factors, tumor promoting agents, and mitogens and is dephosphorylated at growth arrest.

Lagerung

Lagerungsbedingungen:
Bei -20°C lagern. Nach dem Versand ein Jahr lang stabil
Lagerungspuffer:
PBS mit 0.02% Natriumazid und 50% Glycerin pH 7.3.
Aliquotieren ist nicht notwendig bei -20°C Lagerung

*** 20ul-Größen enthalten 0.1% BSA

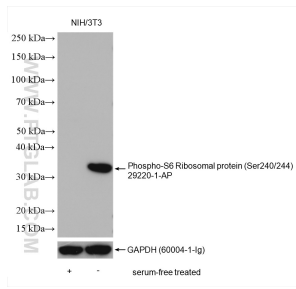
For technical support and original validation data for this product please contact:

T: 1 (888) 4PTGLAB (1-888-478-4522) (toll free
in USA), or 1(312) 455-8498 (outside USA)

E: proteintech@ptglab.com
W: ptglab.com

This product is exclusively available under Proteintech Group brand and is not available to purchase from any other manufacturer.

Ausgewählte Validierungsdaten



Serum-free treated NIH/3T3 cells and 10 % fetal bovine serum treated NIH/3T3 cells were subjected to SDS PAGE followed by western blot with 29220-1-AP (Phospho-S6 Ribosomal protein (Ser240/244) antibody) at dilution of 1:3000 incubated at 4°C overnight. The membrane was stripped and re-blotted with GAPDH antibody as loading control.