

Nur für Forschungszwecke

Phospho-S6 Ribosomal protein (Ser235/236) Polyklonaler Antikörper



Katalog-Nr.: 29223-1-AP

3 Publikationen

Allgemeine Informationen

Katalog-Nr.:
29223-1-AP

Größe:
100ul, Konzentration: 450 µg/ml von
Nanodrop;

Wirt:
Kaninchen

Isotyp:
IgG

GenBank-Zugangsnummer:
BC000524

GeneID (NCBI):
6194

Vollständiger Name:
ribosomal protein S6

Berechnete Masse:
29 kDa

Beobachtete Masse:
32 kDa

Reinigungsmethode:

Antigen-Affinitätsreinigung

Empfohlene Verdünnungen:

WB 1:1000-1:4000

Anwendungen

Geprüfte Anwendungen:

WB, ELISA

In Publikationen genannte Anwendungen:

WB

Getestete Reaktivität:

Human, Maus

Zitierte Arten:

Human

Positivkontrollen:

WB : Mit PDGF behandelte NIH/3T3-Zellen, Mit λ-Phosphatase behandelte NIH/3T3-Zellen

Hintergrundinformationen

Ribosomal protein S6 (RPS6), Phosphoprotein NP33. It may play an important role in controlling cell growth and proliferation through the selective translation of particular classes of mRNA. Ribosomal protein S6 is the major substrate of protein kinases in eukaryote ribosomes. The phosphorylation is stimulated by growth factors, tumor promoting agents, and mitogens. It is dephosphorylated at growth arrest. Phosphorylated at Ser-235 and Ser-236 by RPS6KA1 and RPS6KA3; phosphorylation at these sites facilitates the assembly of the preinitiation complex.

Bemerkenswerte Veröffentlichungen

Verfasser	Pubmed ID	Journal	Anwendung
Peng Du	34522186	Int J Med Sci	WB
Mengqi Liu	36144192	Metabolites	WB
Henan Qin	36880835	Aging (Albany NY)	WB

Lagerung

Lagerungsbedingungen:

Bei -20°C lagern. Nach dem Versand ein Jahr lang stabil

Lagerungspuffer:

PBS mit 0.02% Natriumazid und 50% Glycerin pH 7.3.

Aliquotieren ist nicht notwendig bei -20°C Lagerung

*** 20ul-Größen enthalten 0.1% BSA

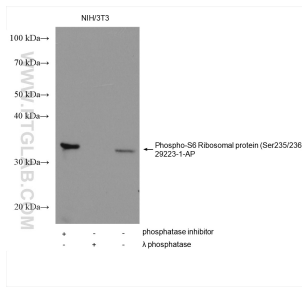
For technical support and original validation data for this product please contact:

T: 1 (888) 4PTGLAB (1-888-478-4522) (toll free
in USA), or 1(312) 455-8498 (outside USA)

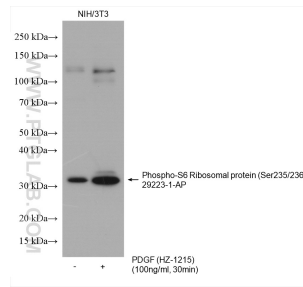
E: proteintech@ptglab.com
W: ptglab.com

This product is exclusively available under Proteintech Group brand and is not available to purchase from any other manufacturer.

Ausgewählte Validierungsdaten



Non-treated NIH/3T3, phosphatase inhibitor treated and λ phosphatase treated NIH/3T3 cells were subjected to SDS PAGE followed by western blot with 29223-1-AP (Phospho-S6 Ribosomal protein (Ser235/236) antibody) at dilution of 1:1000 incubated at room temperature for 1 hours.



Non-treated NIH/3T3 and PDGF (HZ-1215) treated NIH/3T3 cells were subjected to SDS PAGE followed by western blot with 29223-1-AP (Phospho-S6 Ribosomal protein (Ser235/236) antibody) at dilution of 1:2000 incubated at room temperature for 1.5 hours.