

Nur für Forschungszwecke

SPATA2 Polyklonaler Antikörper

Katalog-Nr.:29321-1-AP



Allgemeine Informationen

Katalog-Nr.: 29321-1-AP	GenBank-Zugangsnummer: BC009481	Reinigungsmethode: Antigen-Affinitätsreinigung
Größe: 150ul , Konzentration: 600 µg/ml von Nanodrop;	GeneID (NCBI): 9825	Empfohlene Verdünnungen: WB 1:2000-1:10000 IHC 1:50-1:500 IF 1:50-1:500
Wirt: Kaninchen	Vollständiger Name: spermatogenesis associated 2	
Isotyp: IgG	Berechnete Masse: 58 kDa	
Immunogen Katalognummer: AG30773	Beobachtete Masse: 58-60 kDa	

Anwendungen

Geprüfte Anwendungen:
IF, IHC, WB, ELISA

Getestete Reaktivität:
Human, Maus, Ratte

Hinweis-IHC: Antigenmaskierung mit TE-Puffer pH 9,0 empfohlen. (*) Wahlweise kann die Antigenmaskierung auch mit Citratpuffer pH 6,0 erfolgen.

Positivkontrollen:

WB : Maushodengewebe, Rattenhodengewebe

IHC : Mauslungengewebe,

IF : HeLa-Zellen,

Hintergrundinformationen

The protein SPATA2 (spermatogenesis-associated protein 2) was initially shown to be highly expressed in testicular Sertoli cells, and these early reports suggested SPATA2 to play a role in spermatogenesis. More recently, it was discussed to be involved in the predisposition for psoriasis. SPATA2 is required for TNF-induced cell death. SPATA2 has a potential role during pancreatic development and β -cell proliferation.(PMID: 20119533/PMID: 27458237)

Lagerung

Lagerungsbedingungen:
Bei -20°C lagern.

Lagerungspuffer:

PBS mit 0.02% Natriumazid und 50% Glycerin pH 7.3.

Aliquotieren ist nicht notwendig bei -20°C Lagerung

***** 20ul-Größen enthalten 0.1% BSA**

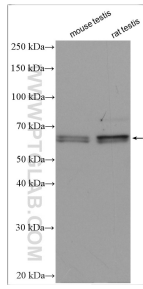
For technical support and original validation data for this product please contact:

T: 1 (888) 4PTGLAB (1-888-478-4522) (toll free
in USA), or 1(312) 455-8498 (outside USA)

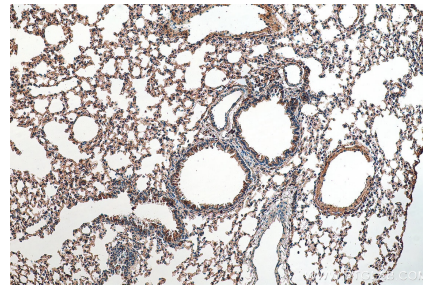
E: proteintech@ptglab.com
W: ptglab.com

This product is exclusively available under Proteintech Group brand and is not available to purchase from any other manufacturer.

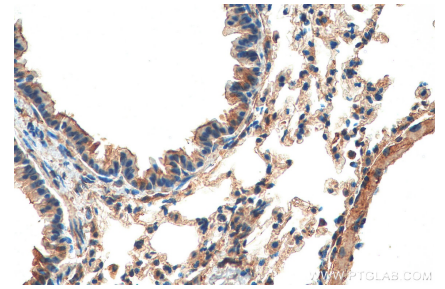
Ausgewählte Validierungsdaten



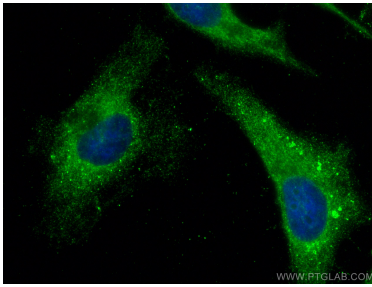
Various lysates were subjected to SDS PAGE followed by western blot with 29321-1-AP (SPATA2 antibody) at dilution of 1:5000 incubated at room temperature for 1.5 hours.



Immunohistochemical analysis of paraffin-embedded mouse lung tissue slide using 29321-1-AP (SPATA2 antibody) at dilution of 1:200 (under 10x lens). Heat mediated antigen retrieval with Tris-EDTA buffer (pH 9.0).



Immunohistochemical analysis of paraffin-embedded mouse lung tissue slide using 29321-1-AP (SPATA2 antibody) at dilution of 1:200 (under 40x lens). Heat mediated antigen retrieval with Tris-EDTA buffer (pH 9.0).



Immunofluorescent analysis of (-20°C Ethanol) fixed HeLa cells using SPATA2 antibody (29321-1-AP) at dilution of 1:200 and CoraLite®488-Conjugated AffiniPure Goat Anti-Rabbit IgG(H+L).