

Nur für Forschungszwecke

GPX1 Polyklonaler Antikörper

Katalog-Nr.: 29329-1-AP

6 Publikationen



Allgemeine Informationen

Katalog-Nr.: 29329-1-AP	GenBank-Zugangsnummer: BC000742	Reinigungsmethode: Antigen-Affinitätsreinigung
Größe: 150ul, Konzentration: 550 µg/ml von Nanodrop;	GeneID (NCBI): 2876	Empfohlene Verdünnungen: WB 1:1000-1:8000
Wirt: Kaninchen	Vollständiger Name: glutathione peroxidase 1	
Isotyp: IgG	Berechnete Masse: 22 kDa	
Immunogen Katalognummer: AG31101	Beobachtete Masse: 22 kDa	

Anwendungen

Geprüfte Anwendungen: WB, ELISA	Positivkontrollen: WB : HEK-293-Zellen, Mausnierengewebe, Rattennierengewebe, SMMC-7721-Zellen, THP-1-Zellen
In Publikationen genannte Anwendungen: WB	
Getestete Reaktivität: Human, Maus, Ratte	
Zitierte Arten: Hausschwein, Maus, Ratte	

Hintergrundinformationen

Gpx protein, known as selenoprotein, consists selenium in its catalytic site. Gpx1 is an abundant isoform, which involves in scavenging endogenous ROS using electron provided by reduced glutathione and ubiquitously expressed the cytoplasm and mitochondria of all cell types. (PMID: 30632027)

Bemerkenswerte Veröffentlichungen

Verfasser	Pubmed ID	Journal	Anwendung
Jiayu Li	36296678	Molecules	WB
Yanan Chen	36225099	J Agric Food Chem	WB
Pei Qian	35745637	Pharmaceuticals (Basel)	WB

Lagerung

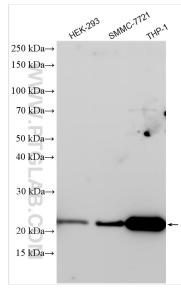
Lagerungsbedingungen:
Bei -20°C lagern. Nach dem Versand ein Jahr lang stabil
Lagerungspuffer:
PBS mit 0.02% Natriumazid und 50% Glycerin pH 7.3.
Aliquotieren ist nicht notwendig bei -20°C Lagerung

*** 20ul-Größen enthalten 0.1% BSA

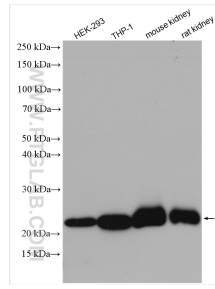
For technical support and original validation data for this product please contact:
T: 1 (888) 4PTGLAB (1-888-478-4522) (toll free in USA), or 1(312) 455-8498 (outside USA)
E: proteintech@ptglab.com
W: ptglab.com

This product is exclusively available under Proteintech Group brand and is not available to purchase from any other manufacturer.

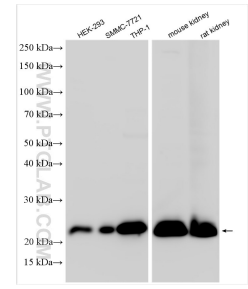
Ausgewählte Validierungsdaten



Various lysates were subjected to SDS PAGE followed by western blot with 29329-1-AP (GPX1 antibody) at dilution of 1:5000 incubated at room temperature for 1.5 hours.



Various lysates were subjected to SDS PAGE followed by western blot with 29329-1-AP (GPX1 antibody) at dilution of 1:4000 incubated at room temperature for 1.5 hours.



Various lysates were subjected to SDS PAGE followed by western blot with 29329-1-AP (GPX1 antibody) at dilution of 1:5000 incubated at room temperature for 1.5 hours.