

Nur für Forschungszwecke

SLC6A19 Polyklonaler Antikörper

Katalog-Nr.:29372-1-AP



Allgemeine Informationen

Katalog-Nr.: 29372-1-AP	GenBank-Zugangsnummer: BC148801	Reinigungsmethode: Antigen-Affinitätsreinigung
Größe: 150ul , Konzentration: 700 µg/ml von Nanodrop;	GeneID (NCBI): 340024	Empfohlene Verdünnungen: WB 1:500-1:2000 IHC 1:50-1:500
Wirt: Kaninchen	Vollständiger Name: solute carrier family 6 (neutral amino acid transporter), member 19	
Isotyp: IgG	Berechnete Masse: 634 aa, 71 kDa	
Immunogen Katalognummer: AG31076	Beobachtete Masse: 71 kDa	

Anwendungen

Geprüfte Anwendungen:

IHC, WB, ELISA

Getestete Reaktivität:

Human, Maus, Ratte

Hinweis-IHC: Antigendemaskierung mit TE-Puffer pH 9,0 empfohlen. (*) Wahlweise kann die Antigendemaskierung auch mit Citratpuffer pH 6,0 erfolgen.

Positivkontrollen:

WB : Mausnierengewebe, HeLa-Zellen

IHC : humanes Nierengewebe, humanes Dünndarmgewebe

Hintergrundinformationen

SLC6A19, also named as BOAT1, encodes system B(0) transmembrane protein that mediates epithelial resorption of neutral amino acids across the apical membrane in kidney and intestine (PubMed: 15044460). The protein contains 634 amino acids and has 12 predicted transmembrane regions with highly expression in human kidney and small intestine and minimal in pancreas (PubMed: 15286787). The expression of SLC6A19 in intestinal cells depends on angiotensin converting enzyme 2 which is the cellular receptor for SARS-CoV-2 (PubMed: 32132184). Mutations in SLC6A19 cause Hartnup disease (PMID: 15286787, PMID: 15286788).

Lagerung

Lagerungsbedingungen:

Bei -20°C lagern. Nach dem Versand ein Jahr lang stabil

Lagerungspuffer:

PBS mit 0.02% Natriumazid und 50% Glycerin pH 7.3.

Aliquotieren ist nicht notwendig bei -20°C Lagerung

*** 20ul-Größen enthalten 0.1% BSA

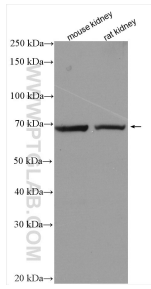
For technical support and original validation data for this product please contact:

T: 1 (888) 4PTGLAB (1-888-478-4522) (toll free in USA), or 1(312) 455-8498 (outside USA)

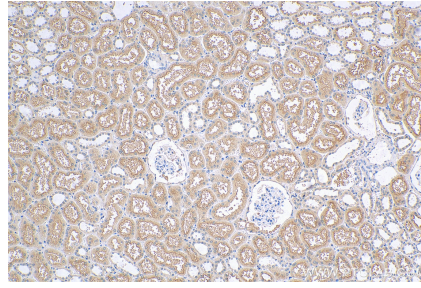
E: proteintech@ptglab.com
W: ptglab.com

This product is exclusively available under Proteintech Group brand and is not available to purchase from any other manufacturer.

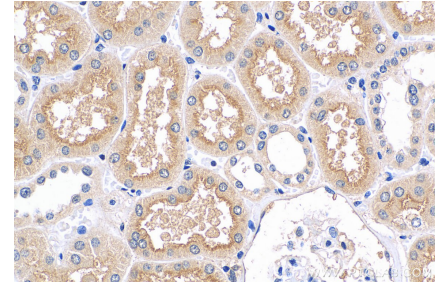
Ausgewählte Validierungsdaten



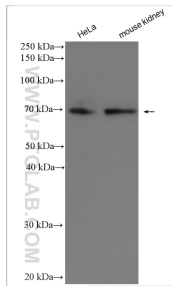
Various lysates were subjected to SDS PAGE followed by western blot with 29372-1-AP (SLC6A19 antibody) at dilution of 1:1000 incubated at room temperature for 1.5 hours.



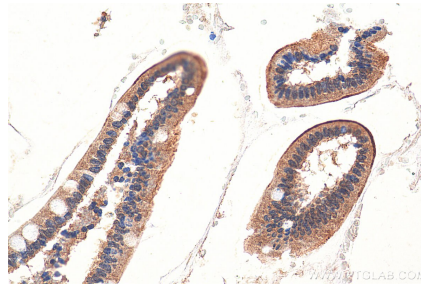
Immunohistochemical analysis of paraffin-embedded human kidney tissue slide using 29372-1-AP (SLC6A19 antibody) at dilution of 1:200 (under 10x lens). Heat mediated antigen retrieval with Tris-EDTA buffer (pH 9.0).



Immunohistochemical analysis of paraffin-embedded human kidney tissue slide using 29372-1-AP (SLC6A19 antibody) at dilution of 1:200 (under 40x lens). Heat mediated antigen retrieval with Tris-EDTA buffer (pH 9.0).



Various lysates were subjected to SDS PAGE followed by western blot with 29372-1-AP (SLC6A19 antibody) at dilution of 1:2000 incubated at room temperature for 1.5 hours.



Immunohistochemical analysis of paraffin-embedded human small intestine tissue slide using 29372-1-AP (SLC6A19 antibody) at dilution of 1:200 (under 40x lens).