

Allgemeine Informationen

Katalog-Nr.: 29386-1-AP	GenBank-Zugangsnummer: NM_000486	Reinigungsmethode: Antigen-Affinitätsreinigung
Größe: 150ul , Konzentration: 1000 µg/ml von359 Nanodrop;	GeneID (NCBI): aquaporin 2 (collecting duct)	Empfohlene Verdünnungen: WB 1:500-1:2000 IHC 1:500-1:2000 IF 1:50-1:500
Wirt: Kaninchen	Vollständiger Name: aquaporin 2 (collecting duct)	
Isotyp: IgG	Berechnete Masse: 29 kDa	
Immunogen Katalognummer: AG29931	Beobachtete Masse: 28-29, 35-38 kDa	

Anwendungen

Geprüfte Anwendungen: IF, IHC, WB, ELISA	Positivkontrollen: WB : bei 37°C inkubiertes Mausnierengewebe, IHC : Mausnierengewebe, humanes Nierengewebe IF : Mausnierengewebe,
Getestete Reaktivität: Human, Maus	
Hinweis-IHC: Antigendemaskierung mit TE-Puffer pH 9,0 empfohlen. (*) Wahlweise kann die Antigendemaskierung auch mit Citratpuffer pH 6,0 erfolgen.	

Hintergrundinformationen

AQP2 (Aquaporin2) is a water channel protein that is widely distributed among mammalian tissues and plays a major role in water homeostasis. AQP2 is mainly found in the apical cell membranes of the kidney's collecting duct cells and is critical for urinary concentration. AQP2 can be glycosylated and this antibody recognizes the 28-29 kDa non-glycosylated as well as the 35-40 kDa glycosylated forms of AQP2.

Lagerung

Lagerungsbedingungen:
Bei -20°C lagern.
Lagerungspuffer:
PBS mit 0.02% Natriumazid und 50% Glycerin pH 7.3.
Aliquotieren ist nicht notwendig bei -20°C Lagerung

*** 20ul-Größen enthalten 0.1% BSA

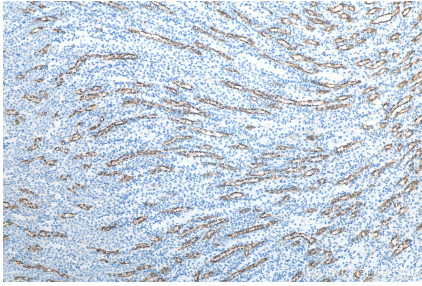
For technical support and original validation data for this product please contact:

T: 1 (888) 4PTGLAB (1-888-478-4522) (toll free in USA), or 1(312) 455-8498 (outside USA)

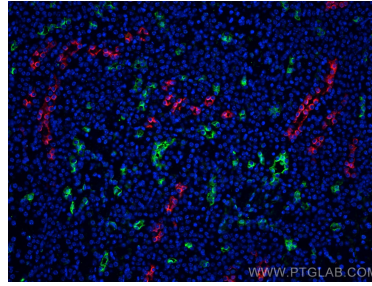
E: proteintech@ptglab.com
W: ptglab.com

This product is exclusively available under Proteintech Group brand and is not available to purchase from any other manufacturer.

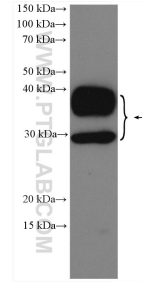
Ausgewählte Validierungsdaten



Immunohistochemical analysis of paraffin-embedded mouse kidney tissue slide using 29386-1-AP (AQP2 antibody) at dilution of 1:1000 (under 10x lens). Heat mediated antigen retrieval with Tris-EDTA buffer (pH 9.0).



Immunofluorescent analysis of (4% PFA) fixed mouse kidney tissue using AQP2 antibody (29386-1-AP) at dilution of 1:200 and CoraLite® 594-Conjugated AffiniPure Goat Anti-Rabbit IgG(H+L), AQP1 antibody (66805-1-Ig, Clone: 2E5D6, green).



37°C incubated mouse kidney tissue were subjected to SDS PAGE followed by western blot with 29386-1-AP (AQP2 antibody) at dilution of 1:1000 incubated at room temperature for 1.5 hours.