

Nur für Forschungszwecke

DPP4/CD26 Polyklonaler Antikörper



Katalog-Nr.: 29403-1-AP

1 Publikationen

Allgemeine Informationen

Katalog-Nr.: 29403-1-AP	GenBank-Zugangsnummer: BC013329	Reinigungsmethode: Antigen-Affinitätsreinigung
Größe: 150ul, Konzentration: 500 µg/ml von Nanodrop;	GeneID (NCBI): 1803	Empfohlene Verdünnungen: WB 1:500-1:2000
Wirt: Kaninchen	Vollständiger Name: dipeptidyl-peptidase 4	
Isotyp: IgG	Berechnete Masse: 88 kDa	
Immunogen Katalognummer: AG30160	Beobachtete Masse: 110 kDa	

Anwendungen

Geprüfte Anwendungen: FC, WB, ELISA	Positivkontrollen: WB : Caco-2-Zellen, HT-29-Zellen
In Publikationen genannte Anwendungen: WB	
Getestete Reaktivität: Human	
Zitierte Arten: Human	

Hintergrundinformationen

DPP4 (also known as CD26) is a serine exopeptidase that cleaves X-proline dipeptides from the N terminus of polypeptides. It is an intrinsic membrane glycoprotein anchored into the cell membrane by its N-terminal end. High levels of the enzyme are found in the brush-border membranes of the kidney proximal tubule and of the small intestine, but several other tissues also express the enzyme. The enzyme is present in the fetal colon but disappears at birth. It is ectopically expressed in some human colon adenocarcinomas and human colon cancer cell lines (PMID:1977364).

Bemerkenswerte Veröffentlichungen

Verfasser	Pubmed ID	Journal	Anwendung
Qiuyu Gong	27444320	Anal Chem	WB

Lagerung

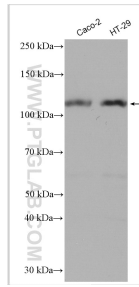
Lagerungsbedingungen:
Bei -20°C lagern. Nach dem Versand ein Jahr lang stabil
Lagerungspuffer:
PBS mit 0.02% Natriumazid und 50% Glycerin pH 7.3.
Aliquotieren ist nicht notwendig bei -20°C Lagerung

*** 20ul-Größen enthalten 0.1% BSA

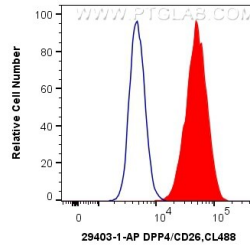
For technical support and original validation data for this product please contact:
T: 1 (888) 4PTGLAB (1-888-478-4522) (toll free in USA), or 1(312) 455-8498 (outside USA)
E: proteintech@ptglab.com
W: ptglab.com

This product is exclusively available under Proteintech Group brand and is not available to purchase from any other manufacturer.

Ausgewählte Validierungsdaten



Various lysates were subjected to SDS PAGE followed by western blot with 29403-1-AP (DPP4 antibody) at dilution of 1:1000 incubated at room temperature for 1.5 hours.



1×10^6 HT-29 cells were intracellularly stained with 0.4 μ g Anti-Human DPP4/CD26 (29403-1-AP) and CoraLite®488-Conjugated AffiniPure Goat Anti-Rabbit IgG(H+L) at dilution 1:1000 (red), or 0.4 μ g Control Antibody. Cells were fixed with 4% PFA and permeabilized with Flow Cytometry Perm Buffer (PF00011-C).