

Nur für Forschungszwecke

# PPP1R3C Polyklonaler Antikörper

Katalog-Nr.:29424-1-AP



## Allgemeine Informationen

<b>Katalog-Nr.:</b> 29424-1-AP	<b>GenBank-Zugangsnummer:</b> BC012625	<b>Reinigungsmethode:</b> Antigen-Affinitätsreinigung
<b>Größe:</b> 150ul , Konzentration: 650 µg/ml von Nanodrop;	<b>GeneID (NCBI):</b> 5507	<b>Empfohlene Verdünnungen:</b> WB 1:1000-1:4000 IHC 1:50-1:500
<b>Wirt:</b> Kaninchen	<b>Vollständiger Name:</b> protein phosphatase 1, regulatory (inhibitor) subunit 3C	
<b>Isotyp:</b> IgG	<b>Berechnete Masse:</b> 317 aa, 36 kDa	
<b>Immunogen Katalognummer:</b> AG30280		

## Anwendungen

<b>Geprüfte Anwendungen:</b> IHC, WB, ELISA	<b>Positivkontrollen:</b>
<b>Getestete Reaktivität:</b> Human, Maus, Ratte	<b>WB :</b> HEK-293T-Zellen, Maus-Cerebellum-Gewebe, Ratten-Cerebellum-Gewebe
<b>Hinweis-IHC: Antigendemaskierung mit TE-Puffer pH 9,0 empfohlen. (*) Wahlweise kann die Antigendemaskierung auch mit Citratpuffer pH 6,0 erfolgen.</b>	<b>IHC :</b> humanes Kolonkarzinomgewebe,

## Hintergrundinformationen

• Protein phosphatase 1 regulatory subunit 3C (PPP1R3C) is an enzyme that binds to protein phosphatase-1 (PP1) as a regulator. The central role of PPP1R3C is associated with glycogenesis and the overexpression of this gene increases glycogen storage. The cellular glycogen level is suppressed when PPP1R3C is knocked-down. PPP1R3C induces glycogen accumulation via HIF1  $\alpha$  during hypoxia and it is hypermethylated in melanoma (PMID: 25846879). Overexpression of PPP1R3C increased hepatic gluconeogenesis in vitro and in vivo while knockdown of PPP1R3C showed an opposite result (PMID: 31181215).

## Lagerung

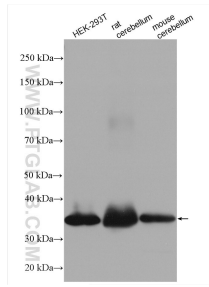
**Lagerungsbedingungen:**  
Bei -20°C lagern.  
**Lagerungspuffer:**  
PBS mit 0.02% Natriumazid und 50% Glycerin pH 7.3.  
Aliquotieren ist nicht notwendig bei -20°C Lagerung

\*\*\* 20ul-Größen enthalten 0.1% BSA

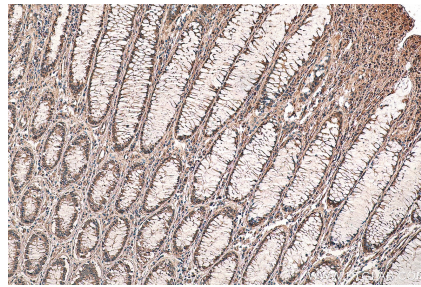
For technical support and original validation data for this product please contact:  
T: 1 (888) 4PTGLAB (1-888-478-4522) (toll free in USA), or 1(312) 455-8498 (outside USA)  
E: proteintech@ptglab.com  
W: ptglab.com

This product is exclusively available under Proteintech Group brand and is not available to purchase from any other manufacturer.

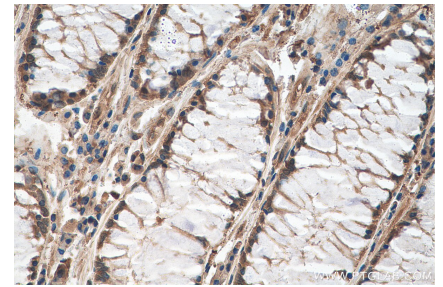
## Ausgewählte Validierungsdaten



Various lysates were subjected to SDS PAGE followed by western blot with 29424-1-AP (PPP1R3C antibody) at dilution of 1:2000 incubated at room temperature for 1.5 hours.



Immunohistochemical analysis of paraffin-embedded human colon cancer tissue slide using 29424-1-AP (PPP1R3C antibody) at dilution of 1:200 (under 10x lens). Heat mediated antigen retrieval with Tris-EDTA buffer (pH 9.0).



Immunohistochemical analysis of paraffin-embedded human colon cancer tissue slide using 29424-1-AP (PPP1R3C antibody) at dilution of 1:200 (under 40x lens). Heat mediated antigen retrieval with Tris-EDTA buffer (pH 9.0).