

Nur für Forschungszwecke

Fibrillin 1 Polyklonaler Antikörper

Katalog-Nr.:29425-1-AP



Allgemeine Informationen

Katalog-Nr.: 29425-1-AP	GenBank-Zugangsnummer: BC146854	Reinigungsmethode: Antigen-Affinitätsreinigung
Größe: 150ul , Konzentration: 450 µg/ml von Nanodrop;	GeneID (NCBI): 2200	Empfohlene Verdünnungen: WB 1:500-1:2000 IHC 1:50-1:500
Wirt: Kaninchen	Vollständiger Name: fibrillin 1	
Isotyp: IgG	Beobachtete Masse: 350 kDa	
Immunogen Katalognummer: AG30283		

Anwendungen

Geprüfte Anwendungen: IHC, WB, ELISA	Positivkontrollen: WB : HeLa-Zellen, IHC : humanes Endometriumkarzinomgewebe,
Getestete Reaktivität: Human	

Hinweis-IHC: Antigendemaskierung mit TE-Puffer pH 9,0 empfohlen. (*) Wahlweise kann die Antigendemaskierung auch mit Citratpuffer pH 6,0 erfolgen.

Hintergrundinformationen

Fibrillin 1 is a 350 kDa large extracellular matrix glycoprotein that formed thread-like microfibril filaments, which provided structural support for tissues, formed elastic fibers in the skin and vessels, regulated the availability of the transforming growth factor beta (TGF-β) protein, and modulated the microenvironment. Fibrillin 1 contains a large number of cysteine-rich epidermal growth factor (EGF)- like domains, most capable of binding calcium ions (cbEGF-like), and a few motifs homologous to the binding protein for transforming growth factor beta (TGFβ1-BP)- like module (PMID: 29220879, PMID: 35234370).

Lagerung

Lagerungsbedingungen:
Bei -20°C lagern. Nach dem Versand ein Jahr lang stabil
Lagerungspuffer:
PBS mit 0.02% Natriumazid und 50% Glycerin pH 7.3.
Aliquotieren ist nicht notwendig bei -20°C Lagerung

*** 20ul-Größen enthalten 0.1% BSA

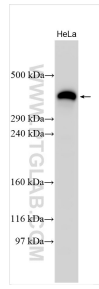
For technical support and original validation data for this product please contact:

T: 1 (888) 4PTGLAB (1-888-478-4522) (toll free in USA), or 1(312) 455-8498 (outside USA)

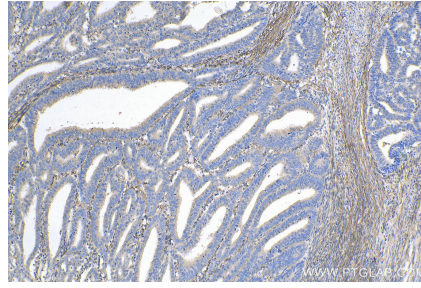
E: proteintech@ptglab.com
W: ptglab.com

This product is exclusively available under Proteintech Group brand and is not available to purchase from any other manufacturer.

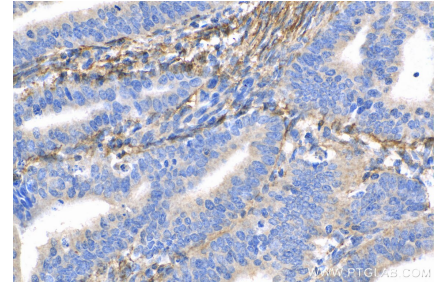
Ausgewählte Validierungsdaten



HeLa cells were subjected to Tris-acetate gel system followed by western blot with 29425-1-AP (Fibrillin 1 antibody) at dilution of 1:1000 incubated at room temperature for 1.5 hours.



Immunohistochemical analysis of paraffin-embedded human endometrial cancer tissue slide using 29425-1-AP (Fibrillin 1 antibody) at dilution of 1:200 (under 10x lens). Heat mediated antigen retrieval with Tris-EDTA buffer (pH 9.0).



Immunohistochemical analysis of paraffin-embedded human endometrial cancer tissue slide using 29425-1-AP (Fibrillin 1 antibody) at dilution of 1:200 (under 40x lens). Heat mediated antigen retrieval with Tris-EDTA buffer (pH 9.0).